



Northern Indiana Commuter Transportation District

VENDOR OPEN HOUSE

APRIL 17, 2019



VENDOR OPEN HOUSE AGENDA

Welcome and Introductions

Safety Briefing

NICTD Website and Plan Room

Upcoming Projects

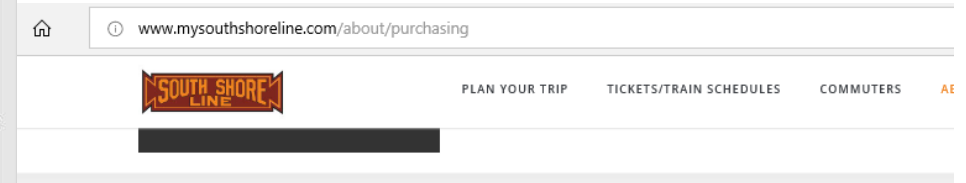
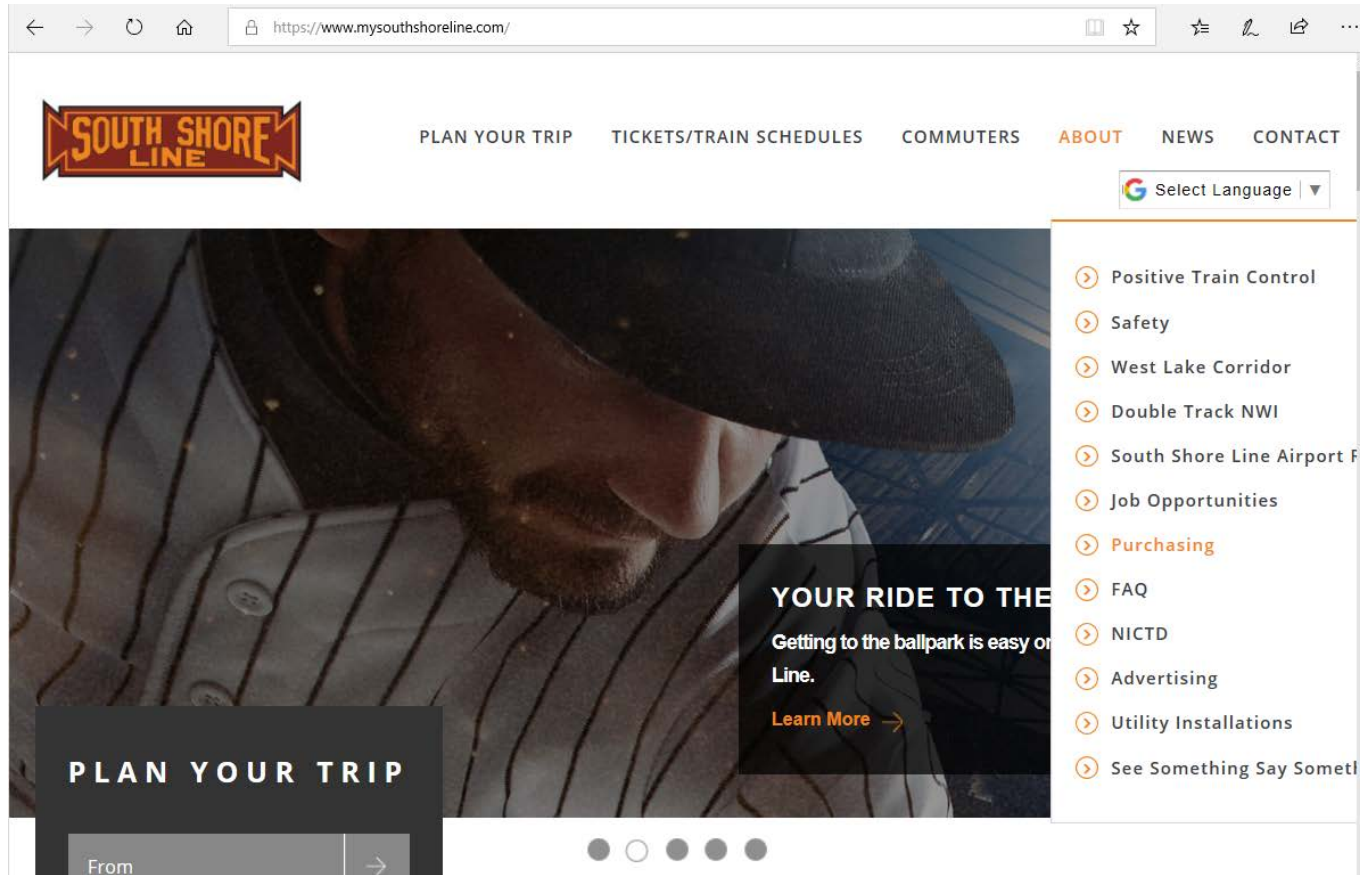
Disadvantaged Business Enterprise (DBE) Participation

Additional Supplier Opportunities

Closing Remarks



NICTD WEBSITE



PURCHASING

The District posts all upcoming bids and proposals on the South Shore Line's Plan Room. Vendors are encouraged to visit this site and create a login to automatically be notified of any upcoming bids and proposals. [Click here to enter.](#)

The Purchasing Department is responsible for providing supplies, materials and services to ensure they are available on time, in the proper quantity and place, with quality and cost consistent with the needs of the District. The Purchasing Department facilitates the processes governed by state and federal law to ensure best practices are followed.



NICTD WEBSITE

[PLAN YOUR TRIP](#)[TICKETS/TRAIN SCHEDULES](#)[COMMUTERS](#)[ABOUT](#)[NEWS](#)[CONTACT](#)

Purchase Order Terms and Conditions

[NICTD Protest Procedure Policy #10](#)[NICTD's DBE List](#)

Results of Board Awards

[Board Awards 5-18-18](#)[Board Awards 1-25-19](#)[Board Awards 3-22-19](#)

Vendor Open House

[Invite](#)[Table Booth Availability](#)

West Lake Corridor Project

[SOQ \(Statement of Qualifications\)](#)[NDA \(Non Disclosure Agreement\)](#)[FEIS & ROD Documents](#)

Bid Openings






[Catenary Wire](#)[Shops Roof](#)[Rail and Ties](#)[Gallery Car Cameras](#)[US 20 Construction and Culverts](#)[East Chicago Station Improvements](#)

Required Sample Forms


[Certificate A - Eligible Bidder](#)[Certificate B - Lower-Tier](#)[Certificate C1 - DBE Affidavit - Non-DBE Prime 9.78%](#)[Certificate C2 - DBE Affidavit - DBE Prime 9.78%](#)[Certificate C3 - DBE Utilization Plan](#)[Certificate C4 - DBE Letter of Intent](#)[Certificate C5 - DBE Unavailability Certificate](#)[Certificate C6 - DBE Nondiscrimination Certificate](#)[Certificate D - Rest. on Lobbying](#)[Certificate E - Drug Free](#)[Certificate F - Buy America](#)[Certificate G - Cert of Qualification](#)[Certificate H - E-Verify Affidavit](#)[Certificate I - Certification Re-Investments in Iran](#)[Certificate J - Form 95 \(Revised 2008\)](#)[Certificate J - Form 96 \(Revised 2013\)](#)[Good Faith Effort](#)[DBE Bidder Information](#)




NICTD PLAN ROOM

https://nictdplanroom.com/View/ViewJobList.aspx?group_id=public_all

Northern Indiana Commuter Transportation District (NICTD)



POWERED BY

**EASTERN**
Engineering
WBE Certified


The South Shore Line is a commuter rail line operated by the Northern Indiana Commuter Transportation District (NICTD)


Public Projects

Private Projects

Addendum Watch

Sign In/Register

Search Projects 



Welcome

Welcome!

[Learn how to register on the plan room as a vendor or a contractor.](#)

Please click on the Goods and Services link below and pick the area of the project or projects you are interested in. Please click on the Construction link for a complete listing of all current NICTD construction projects. From there you may view the documents, view a plan holder's list, and place an order for bid documents.

[NICTD Goods and Services](#)

[NICTD Construction](#)

No Projects posted at this time.



NICTD PLAN ROOM

[Public Projects](#)[Private Projects](#)[Addendum Watch](#)[My Downloads](#)[My Account ▾](#)

West Lake Corridor SOQ

[Order/Download >](#)[Information](#)[Plan Holders](#)[Specifications](#)

West Lake Corridor SOQ



Company Contact

NICTD
Tony Siegmund



Location



Pre-Bid Information



Bid Information

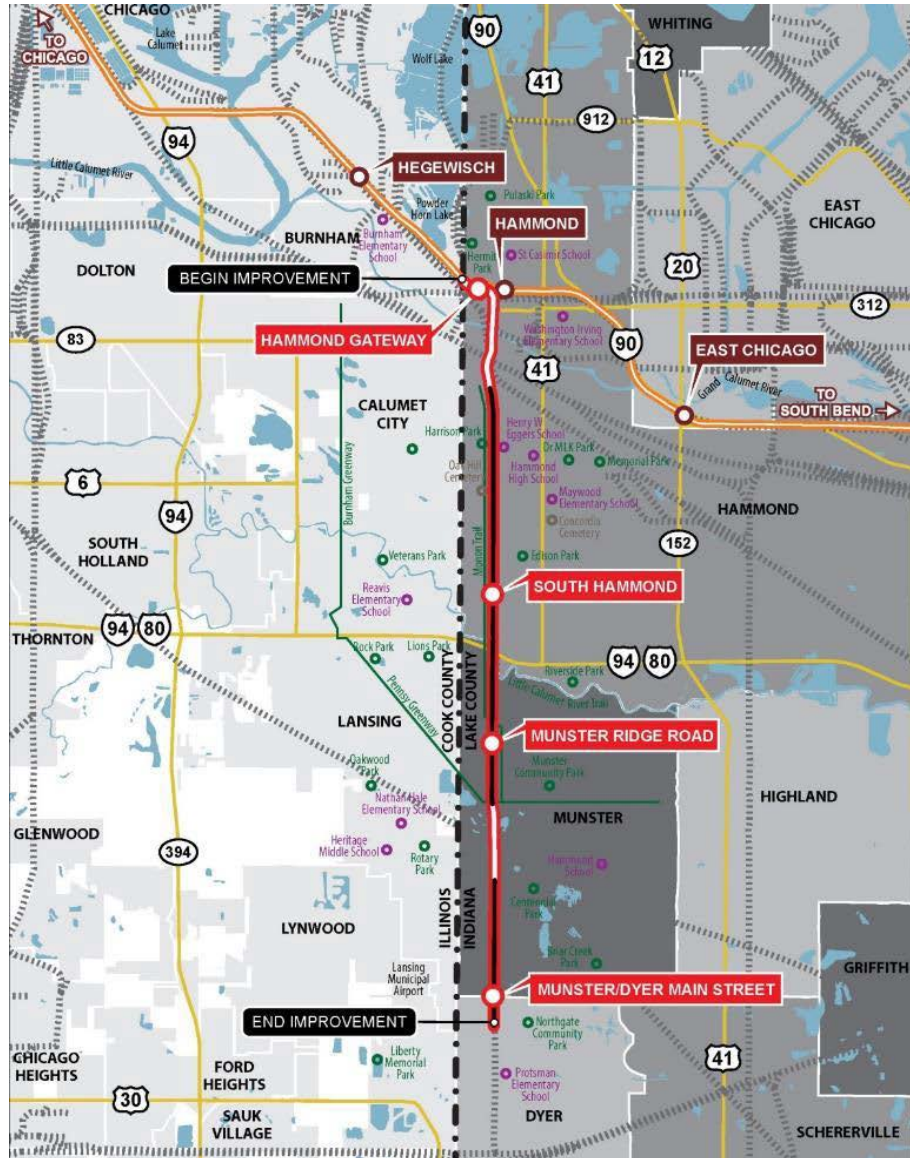
05/14/2019 03:00 PM
As provided in the RFQ, SOQs shall be submitted in a sealed envelope clearly labeled with the name of the Proposer and labeled as "Statement of Qualifications, Response to NICTD Request for Qualifications, West Lake Corridor Project", which shall be contained within an outer shipping envelope.



Description

To obtain SSI documents, please click the orange "Order/Download" button once you have registered and log in. This is located in the upper right corner under the Specifications tab NICTD is issuing this Request for Qualifications ("RFQ") in accordance with the provisions of Indiana Code§ 5-1.3 et. seq. ("Rail Projects Statute"), Indiana Code §5-30 et seq. ("Design-Build Statute"), and

WEST LAKE CORRIDOR PROJECT



- Addition of approximately eight miles of new track along the old Monon Line from Dyer to connect to existing South Shore Line at Hammond.
- Realignment of SSL in Hammond
- Shoofly at Munster Dyer Station entrance underpass
- Four new stations, including a new relocated Hammond Station
- New maintenance shop
- Layover yard with crew facilities in Hammond



WEST LAKE CORRIDOR PROJECT

Structural Elements

82 Spans

- 3 river spans
- 1 CSX bridge
- 3 major spans (200' +/- Thru Truss Girders)
- 5 spans crossing railroads

5 Pedestrian tunnels

- 1 underground
- 4 at-grade under elevated track

Retaining walls

- Precast used in elevated structure approaches
- Cast in Place construction used at Main Street

Contracting Opportunities

- Project will be procured using Design Build delivery method
- Selection will use Best Value methodology
- Construction Management
- Design Build contract will include:
 - Track including sidings and embankment
 - Systems including catenary, traction power sub stations (2), wayside signals, crossing signals, PTC, communications, dispatch center modifications as necessary
 - Structures including precast and cast-in-place walls, elevated structures and bridges
 - Four Stations including 2 buildings, parking lots, platforms and canopies
 - Maintenance facility including shops, layover yard, crew support and car wash
 - Bike trail modifications
 - Underground utility relocations
 - Remediation of any currently owned property
 - Additional requirements outlined in third party MOAs with communities, railroads, and utilities

Contracting Opportunities (Continued)

- Design Build contract will **not** include:
 - Overhead utility relocations
 - Real estate acquisition
 - Demolition and remediation of any acquired property
 - Rehabilitation of vehicles



WEST LAKE CORRIDOR PROJECT

Stations

Munster/Dyer Main Street Station

- Mixed-use path access to station and underpass to get across CSX tracks
- 6-car high-level platform
- Two warming shelters
- Parking
- Station Building
- Pump Station
- Traction Power Substation

Munster Ridge Station

- 6-car high-level platform
- Two warming shelters
- Parking

South Hammond Station

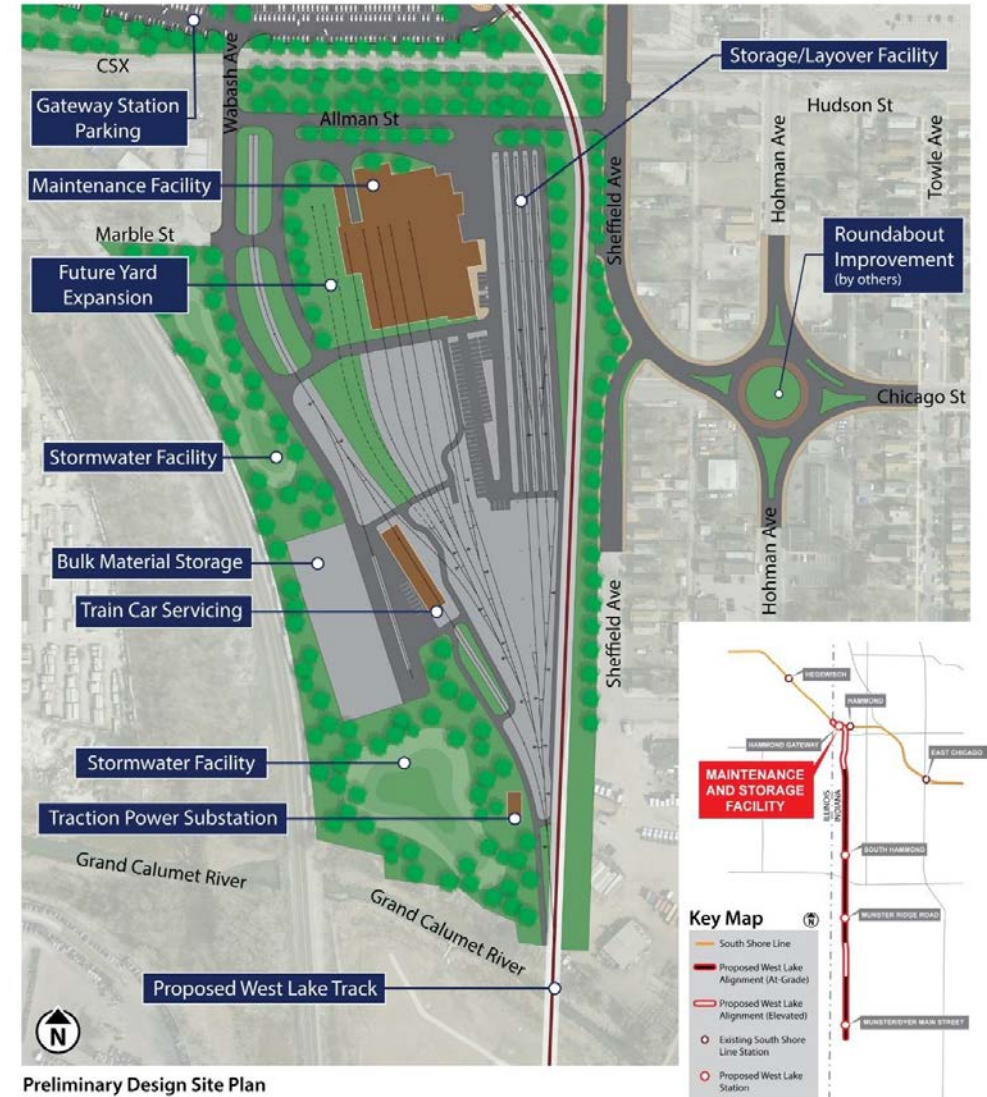
- 6-car high-level platform
- Two warming shelters
- Parking
- Bike lockers

Hammond Gateway Station

- Two high-level platforms (one 6-car one 8-car)
- Parking
- Station Building and Plaza
- Track elevated and realigned
- Pedestrian Underpass

Hammond Maintenance and Storage Facility

- Provides all maintenance functions
- Layover yard stores vehicles overnight
- Car Wash
- Material storage
- Employee welfare facilities for train operators, conductors, and staff
- Traction power substation
- Storm water detention





WEST LAKE CORRIDOR PROJECT

Funding sources:

50% Federal Transit Administration (FTA) through the Capital Investment Grant Program

50% Local Match from the State of Indiana, Northwest Indiana Regional Development Authority, and NICTD.

DOUBLE TRACK NWI PROJECT





DOUBLE TRACK NWI PROJECT

What is Included?

- Construction Management
- Changes at 5 stations – major changes in Miller (Gary) and Michigan City/11th St.
- Major changes in operation through Michigan City
- 4 New Bridges
 - CSX & Hobart Rd in Gary
 - NS & Arcelor Mittal in Burns Harbor
- 20 culverts
- Track and Signal Work
- Fiber Optic Work
- PTC Updates
- Critical: Minimization of Impact on Existing SSL Service



DOUBLE TRACK NWI PROJECT

Station Changes

Miller Station

- Two 8-car high-level platforms
- Realign 12/20
- Storage Tracks
- Parking
- Station

Portage/Ogden Dunes

- High-level platform
- Additional parking

Dune Park

- Second boarding platform
- Re-align Calumet Trail under SR 49 bridge
- Additional parking

Beverly Shores

- Two low-level platforms
- No impact to historic station building

Michigan City

- Removes embedded street-running track
- Two new tracks south of 10th St. and north of 11th St., separated by roadway
- Removes 21 at-grade crossings and upgrades remaining crossings
- Closes 3 streets south of 10th, closes 10 streets north of 11th
- Two 8-car high-level platforms
- TOD/parking garage and station facility
- Incorporates historic station facade



DOUBLE TRACK NWI PROJECT

The environmental review has been completed and a Finding of No Significant Impact was issued.

The project will require extensive environmental permitting, and wetland mitigation and the IN Dunes National Park.

Environmental inspectors will be on hand during construction.

Design is currently completed through 30%

Project will be procured as a Design-Bid-Build method.

Final design is expected to be completed in 2020.

Project will include the acquisition of 200 parcels.



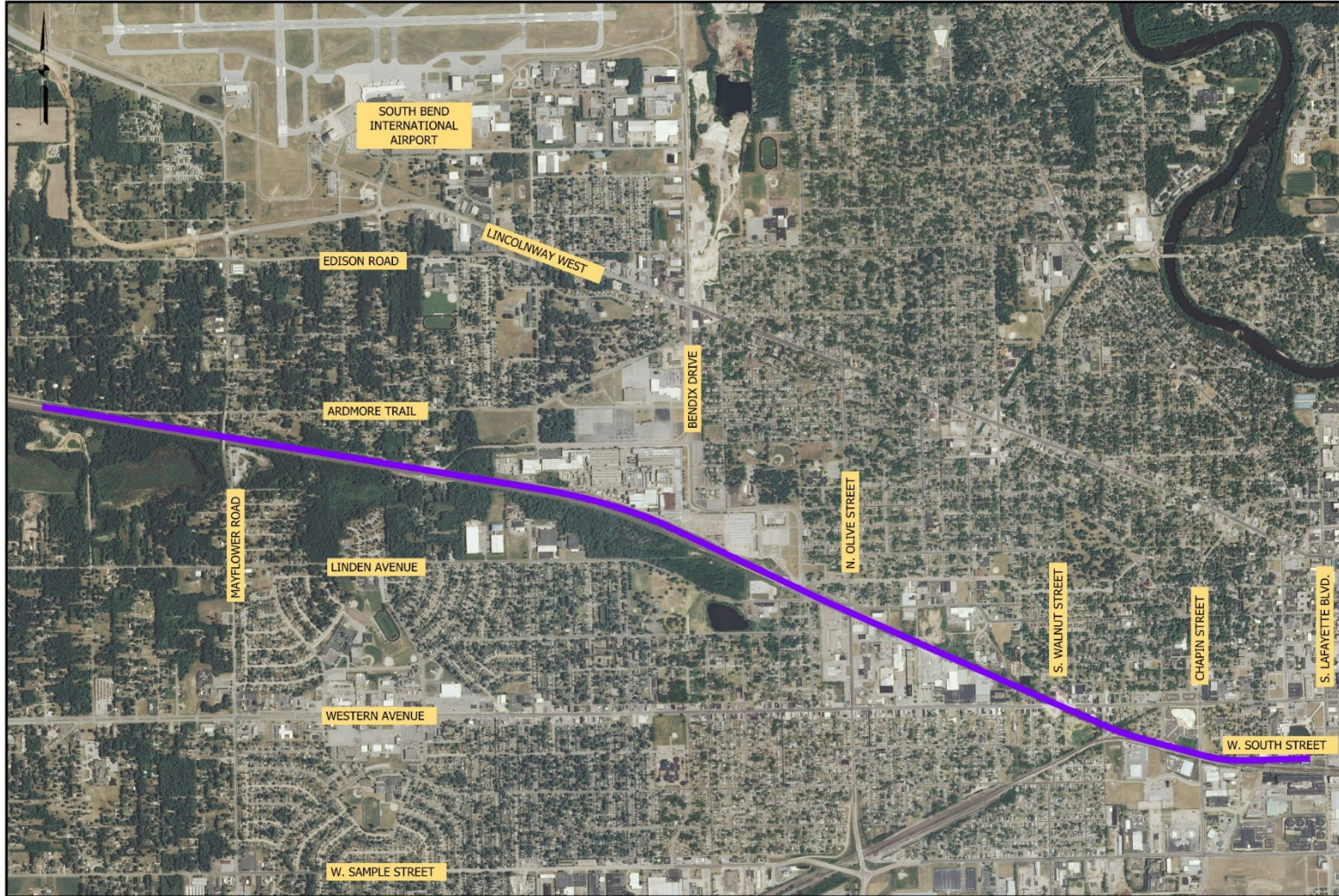
DOUBLE TRACK NWI PROJECT

Funding sources:

50% Federal Transit Administration (FTA) through the Capital Investment Grant Program

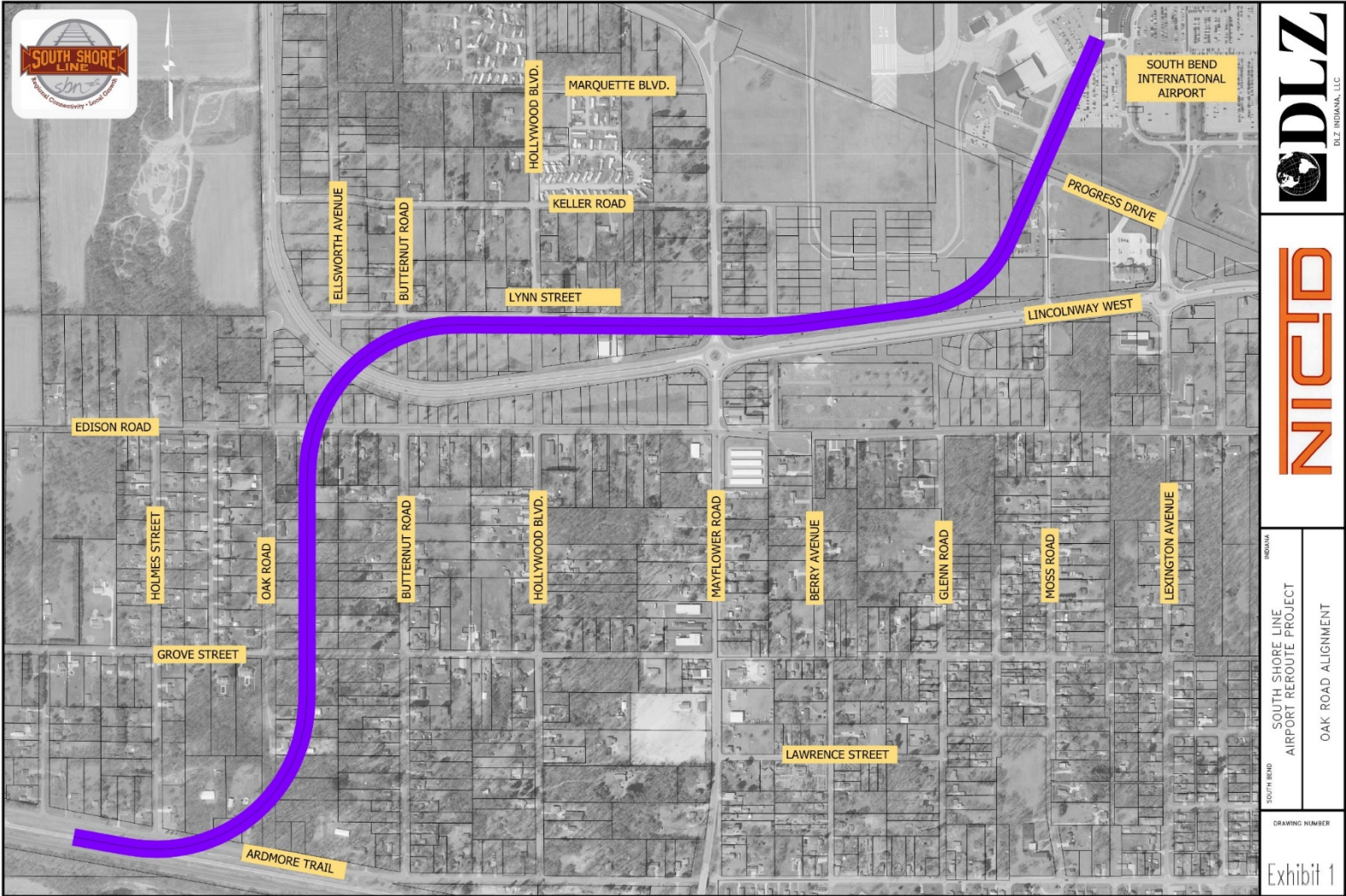
50% Local Match from the State of Indiana, Lake and Porter Counties (Northwest Indiana Regional Development Authority), LaPorte County and Michigan City, St. Joseph County, and NICTD.

SOUTH BEND AIRPORT RELOCATION





SOUTH BEND AIRPORT RELOCATION





METRA ELECTRIC DISTRICT IMPROVEMENTS

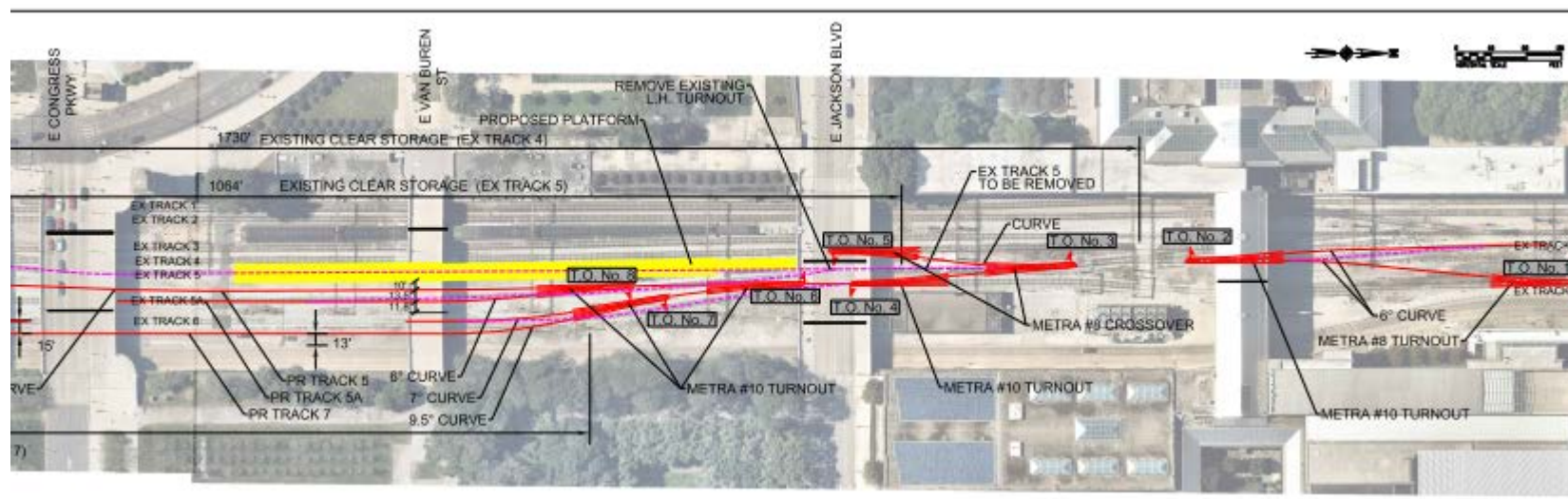
This project will be funded primarily by NICTD through State of Good Repair funding received from the Federal Transit Administration.

All work associated with this project takes place on Metra's railway.

This project will be procured and contracted out through Metra.

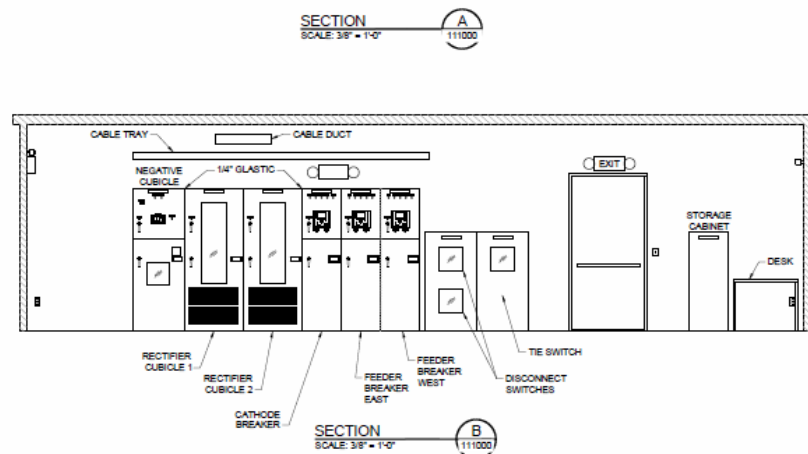
Work is expected to include:

- Design and engineering
- Environmental review
- Track extension and reconfiguration
- Improvements to turnouts and crossovers
- Improvements to the signal system, and traction power distribution
- Additional high level platform with accessibility by stairs, elevator, and through a tunnel extension





TRACTION POWER SUBSTATION MODERNIZATION



NORTHERN INDIANA COMMUTER TRANSPORTATION DISTRICT

NICTD 401 NORTH ROEIKE AVENUE
MICHIGAN CITY, INDIANA 46360-2888
219-874-4221

Location: **NICTD SUBSTATION MODERNIZATION**

Description: **NEW TPSS INTERIOR ELEVATIONS**

Document Number: **30% DRAWING SUBMITTAL**

Designed By: **BJ** Drawn By: **NJD** Checked By: **EK** Approved By: **EK**

Revisions: **Date** Sheet Number: **111004**



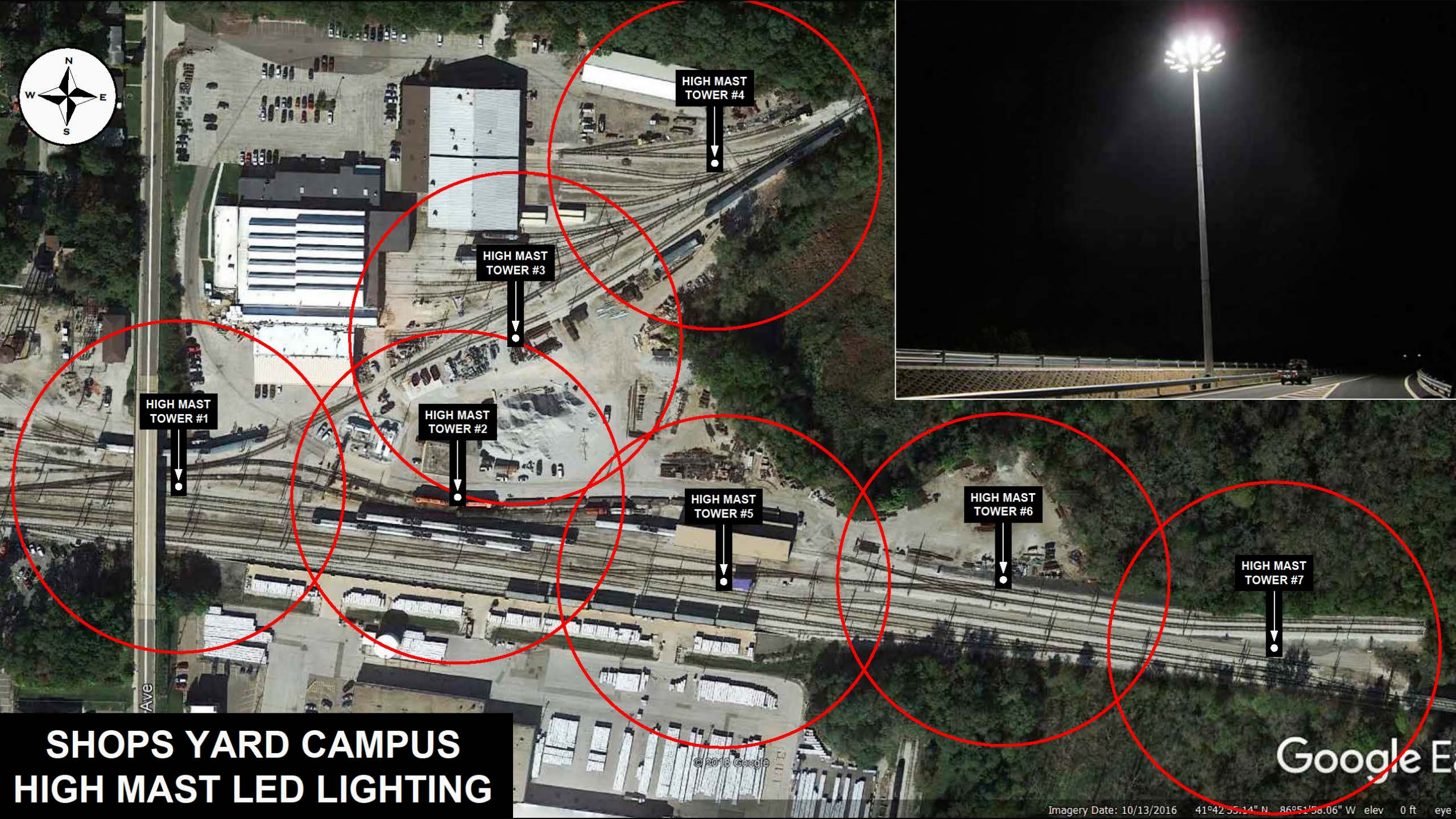
TRACTION POWER SUBSTATIONS

MODERNIZE 8 EXISTING SUBSTATIONS

- Rectifier Transformers – Dry Type (34.5 KV) and Oil (69KV) site-dependent
- Cable Duct
- 12 Pulse Rectifier
- Switchgear
- Protective Relaying
- SCADA
- Communications

BUILD NEW SUBSTATIONS

- 2 – 5 Prefabricated Buildings
- Site Development



HIGH MAST
TOWER #1

HIGH MAST
TOWER #2

HIGH MAST
TOWER #3

HIGH MAST
TOWER #4

HIGH MAST
TOWER #5

HIGH MAST
TOWER #6

HIGH MAST
TOWER #7

**SHOPS YARD CAMPUS
HIGH MAST LED LIGHTING**

© 2018 Google

Google Earth

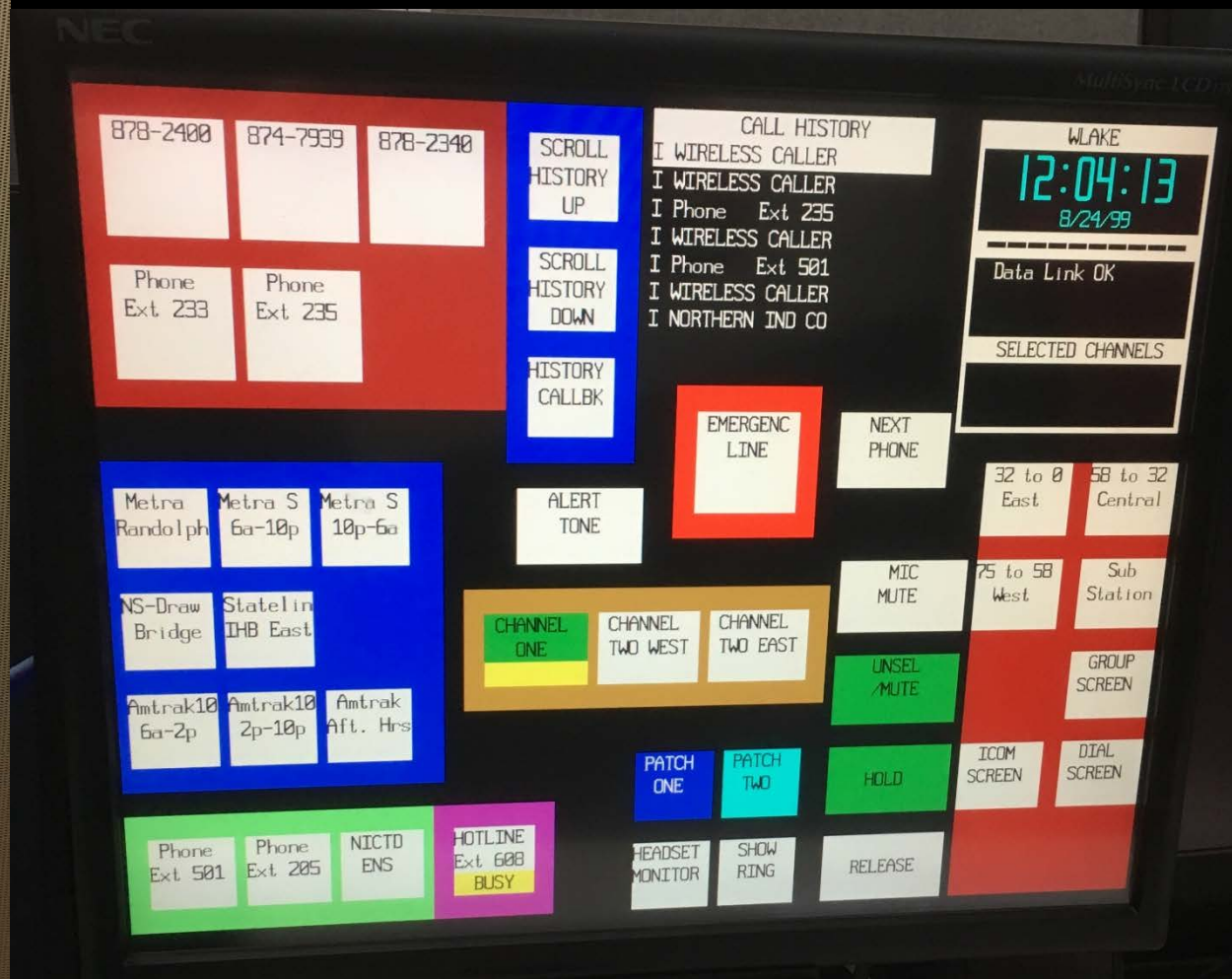
Imagery Date: 10/13/2016 41°42'55.14" N - 86°51'58.06" W elev 0 ft eye



LIGHTING PROJECTS

MICHIGAN CITY SHOPS YARD LIGHTING

- High Mast LED
- 1-2 Footcandles
- Raceways, Wiring, Foundations
- Raceways for Surveillance

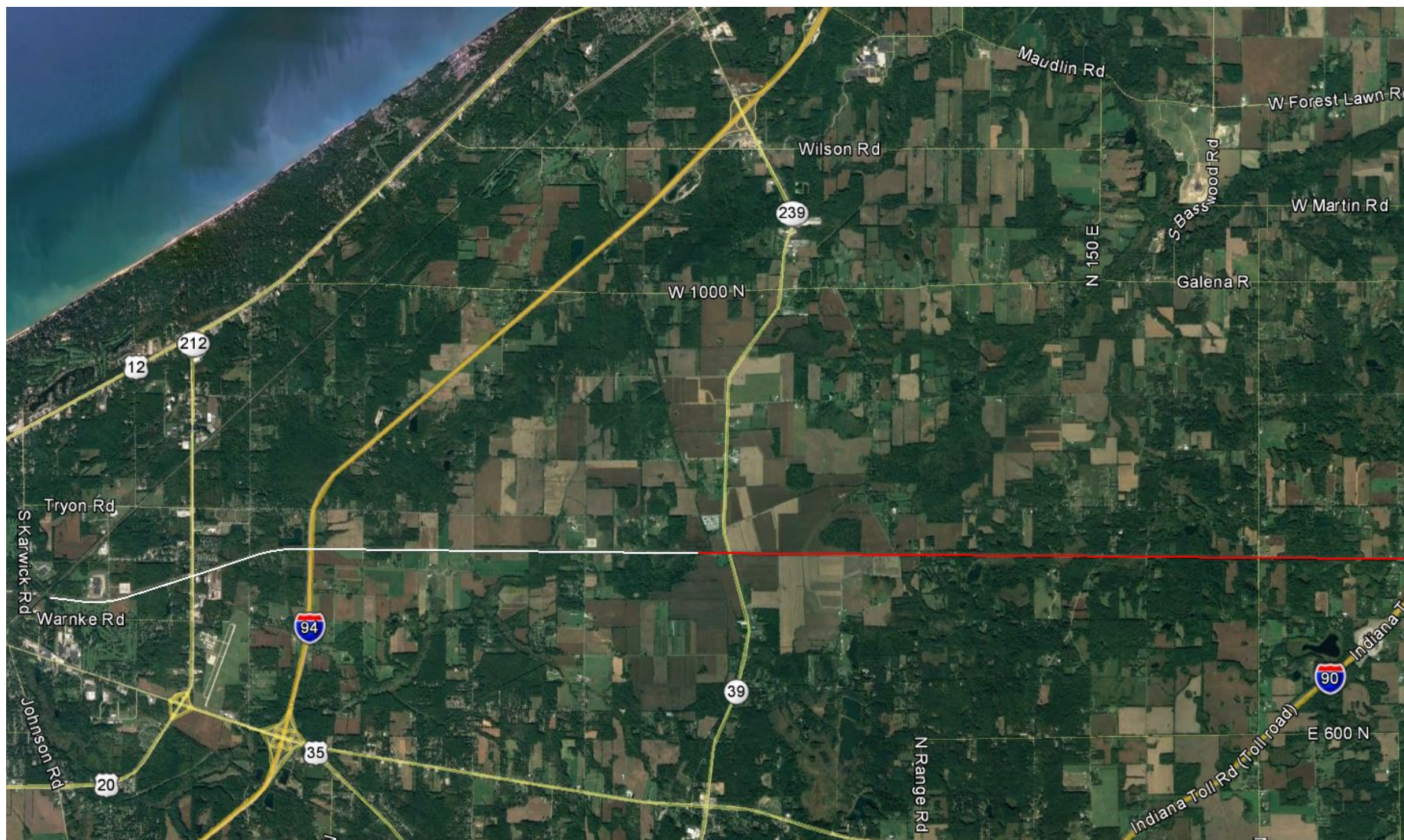


MODERNIZE TELEPHONE/RADIO CONSOLES

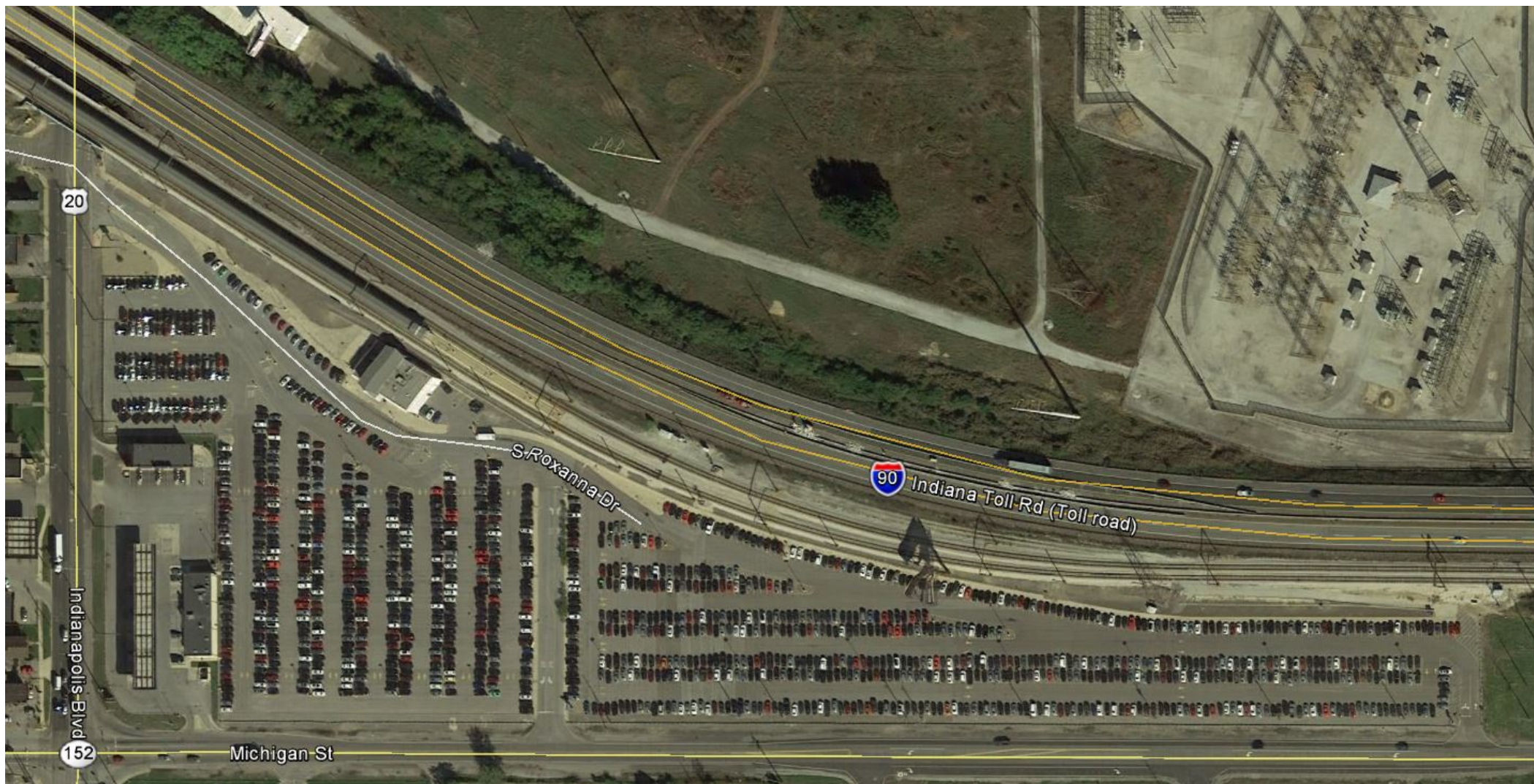
- Design, Furnish, Install, Train
- 4 Communication Workstation Consoles
- Common Equipment
- Screens, Controllers, Speakers, Footswitches, Headset, Handsets, etc.
- Interface to internal and external communications networks
- High Reliability and Availability with **No Single Points of Failure**

MODERNIZE RADIO NETWORK

- 1 Base Station
- 2 Repeaters
- Leverage fiber-optic network to replace DTMF repeater keying & duplexers







FACILITY IMPROVEMENTS





CAMERA SYSTEM UPGRADES

Assess NICTD's existing video system (cameras, servers, storage and network bandwidth)

Design and construct a high bandwidth network from Chicago to South Bend (10 GB)

Provide planning and installation for current and new camera locations

Replacement of local network infrastructure (switches and media converters)

Specification and installation of video storage (local and centralized)

Provide video feeds at designated locations.



DISADVANTAGED BUSINESS ENTERPRISE PARTICIPATION

Current DBE Goal: 9.78%

DBE goal changes October 1, 2019

DBE vendor listing on NICTD Website

Indiana Department of Transportation – DBE certifying entity for the State of Indiana

<https://entapps.indot.in.gov/DBELocator/>



ADDITIONAL SUPPLIER OPPORTUNITIES

Services

- Snow plowing at Stations
- Heating & Air Conditioning Repairs
- Overhead Door Repairs
- Fencing
- Cleaning

Supplies

- Safety Supplies
- Hand Tools
- Fasteners
- Electrical Supplies
- Fuel, Oils, and Lubricants
- Welding Supplies
- Office Supplies
- Printing (signage/time tables)



PURCHASING DEPARTMENT

Key Contacts

Tony Siegmund

Purchasing Manager

(219)874-4221 ext. 267

tony.siegmund@nictd.com

Carrie Hoyt

Contract Specialist

(219)874-4221 ext. 210

carrie.hoyt@nictd.com

Michele Laney

Buyer

(219)874-4221 ext. 262

michele.laney@nictd.com

Stephanie Modglin

Chief Clerk of Procurement

(219)874-4221 ext. 286

stephanie.modglin@nictd.com



NICTD Website

www.mysouthshoreline.com

West Lake Corridor Project

www.nictdwestlake.com

Plan Room

www.nictdplanroom.com

Double Track NWI Project

www.doubletrack-nwi.com