



# Northern Indiana Commuter Transportation District

---

VENDOR OPEN HOUSE

AUGUST 19, 2020



# VENDOR OPEN HOUSE AGENDA

Welcome and Introductions

NICTD Website and Plan Room

Upcoming Projects

Disadvantaged Business Enterprise (DBE) Participation

Additional Supplier Opportunities

Closing Remarks



# Questions

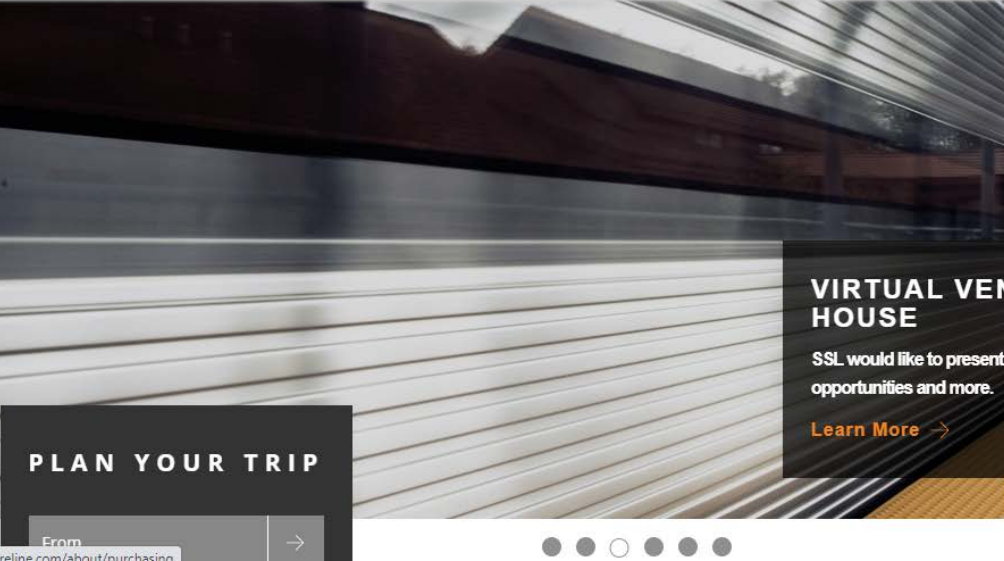
There will be time at the end of the presentation for Questions; however, you are welcome to submit questions throughout the presentation.

To submit questions select the Questions box and type your question in the text box populated below. Your question will be sent to a staff member for an answer.

The screenshot displays the GoTo Webinar interface. At the top, there's a menu bar with 'File', 'View', and 'Help'. Below it, the 'Audio' section is active, showing options for 'Computer audio', 'Phone call' (selected), and 'No audio'. It also displays dialing information: 'Dial: +1 (415) 655-0060', 'Access Code: 584-584-584 #', and 'Audio PIN: 58495 #'. A link for 'Problem dialing in?' is provided. Below the audio section, the 'Attendees' list shows '2 of 1001 (max)' attendees, with 'Steve (Me)' listed. A search bar is present. The 'Questions' section is at the bottom, featuring a text box with the question 'Q: How do I find the documents?' and a placeholder 'Enter a question for staff'. A 'Send' button is located to the right of the text box. At the very bottom, it says 'Sample Webinar', 'Webinar ID: 653-693-283', and 'This session is being recorded.' with the GoTo Webinar logo.



# NICTD WEBSITE

[PLAN YOUR TRIP](#)[TICKETS/SCHEDULES](#)[TRAIN STATUS](#)[NEWS](#)[ABOUT](#)[CONTACT](#)

- Sanitized for Rider Safety
- Frontline Workers Ride Free
- NICTD
- Safety
- See Something Say Something
- Positive Train Control
- Americans with Disabilities Act
- FAQ
- Double Track NWI
- West Lake Corridor
- Purchasing**
- Contractors
- Advertising
- Job Opportunities



www.mysouthshoreline.com/about/purchasing

[PLAN YOUR TRIP](#)[TICKETS/TRAIN SCHEDULES](#)[COMMUTERS](#)[AE](#)

## PURCHASING

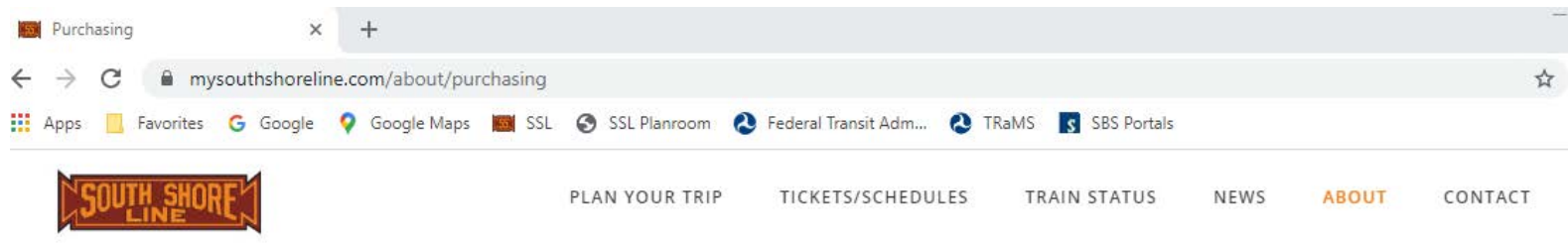
The District posts all upcoming bids and proposals on the South Shore Line's Plan Room. Vendors are encouraged to visit this site and create a login to automatically be notified of any upcoming bids and proposals. [Click here to enter.](#)

The Purchasing Department is responsible for providing supplies, materials and services to ensure they are available on time, in the proper quantity and place, with quality and cost consistent with the needs of the District. The Purchasing Department facilitates the processes governed by state and federal law to ensure best practices are followed.





# NICTD WEBSITE



## Purchase Order Terms and Conditions

## NICTD Protest Procedure Policy #10

## Contractor Safety Requirements

## Safety Orientation for Contractors

## Configuration Management

## Configuration Management Informational Letter

## Configuration Management Requirements (PTC related projects and purchases only)

## Drug and Alcohol Requirements on Track

## 49 CFR Part 40

## Contractor Plan 49 CFR Part 219

## Results of Board Awards

## Board Awards 3-22-19

## Board Awards 9-30-19

## Board Awards 12-02-19

## Board Awards 1-27-20

## Board Awards 4-22-20

## Required Sample Forms

## Certificate A - Eligible Bidder

## Certificate B - Lower-Tier

## Certificate C1 - DBE Affidavit - Non-DBE Prime 9.3%

## Certificate C2 - DBE Affidavit - DBE Prime 12%

## Certificate C3 - DBE Utilization Plan

## Certificate C4 - DBE Letter of Intent

## Certificate C5 - DBE Unavailability Certificate

## Certificate C6 - DBE Nondiscrimination Certificate

## Certificate D - Rest. on Lobbying

## Certificate E - Drug Free

## Certificate F - Buy America

## Certificate G - Cert of Qualification

## Certificate H - E-Verify Affidavit






## Certificate I - Certification Re-Investments in Iran

## Certificate J - Form 96 (Revised 2013)


## Good Faith Effort




# NICTD PLAN ROOM

[https://nictdplanroom.com/View/ViewJobList.aspx?group\\_id=public\\_all](https://nictdplanroom.com/View/ViewJobList.aspx?group_id=public_all)

**Northern Indiana Commuter Transportation District (NICTD)**



POWERED BY

**EASTERN**  
Engineering  
WBE Certified


The South Shore Line is a commuter rail line operated by the Northern Indiana Commuter Transportation District (NICTD)


Public Projects

Private Projects

Addendum Watch

Sign In/Register

Search Projects 



## Welcome

Welcome!

[Learn how to register on the plan room as a vendor or a contractor.](#)

Please click on the Goods and Services link below and pick the area of the project or projects you are interested in. Please click on the Construction link for a complete listing of all current NICTD construction projects. From there you may view the documents, view a plan holder's list, and place an order for bid documents.

[NICTD Goods and Services](#)

[NICTD Construction](#)

No Projects posted at this time.



# NICTD PLAN ROOM

[Public Projects](#)[Addendum Watch](#)[My Downloads](#)[My Account](#) ▼

## New Multi-Level Type Electric Multi-Unit Commuter Cars

[Information](#)[Plan Holders](#)[Specifications](#)[Addenda](#)

### New Multi-Level Type Electric Multi-Unit Commuter Cars



#### Company Contact

NICTD  
Tony Siegmund



#### Location



#### Pre-Bid Information

06/30/2020 09:00 AM CT  
A Pre-Proposal Meeting will be held on Tuesday, June 30, 2020 at 9:00 AM, local time, in the Engineering Building Training Room, located at 601 N. Roeske Avenue, Michigan City, Indiana 46360. To join via conference call, dial 1-(605)-475-4002 and use Access Code 750693.



#### Bid Information

10/12/2020 02:30 PM CT  
Proposals are to be submitted with one (1) original, which shall contain original signatures, and three (3) electronic (USB) formatted copies to the Purchasing Manager no later than 2:30 p.m., local time, on October 12, 2020. Proposals may be mailed or hand carried to: Northern Indiana Commuter Transportation District Attn: Purchasing Manager 33 East U.S. Highway 12 Chesterton, IN 46304-3514

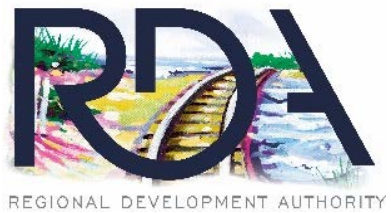


#### Description

Please refer to the Technical Provisions (Exhibit 3) in the Sample Contract where you will find the full description of the technical specifications and other related details.



# DOUBLE TRACK NWI PROJECT



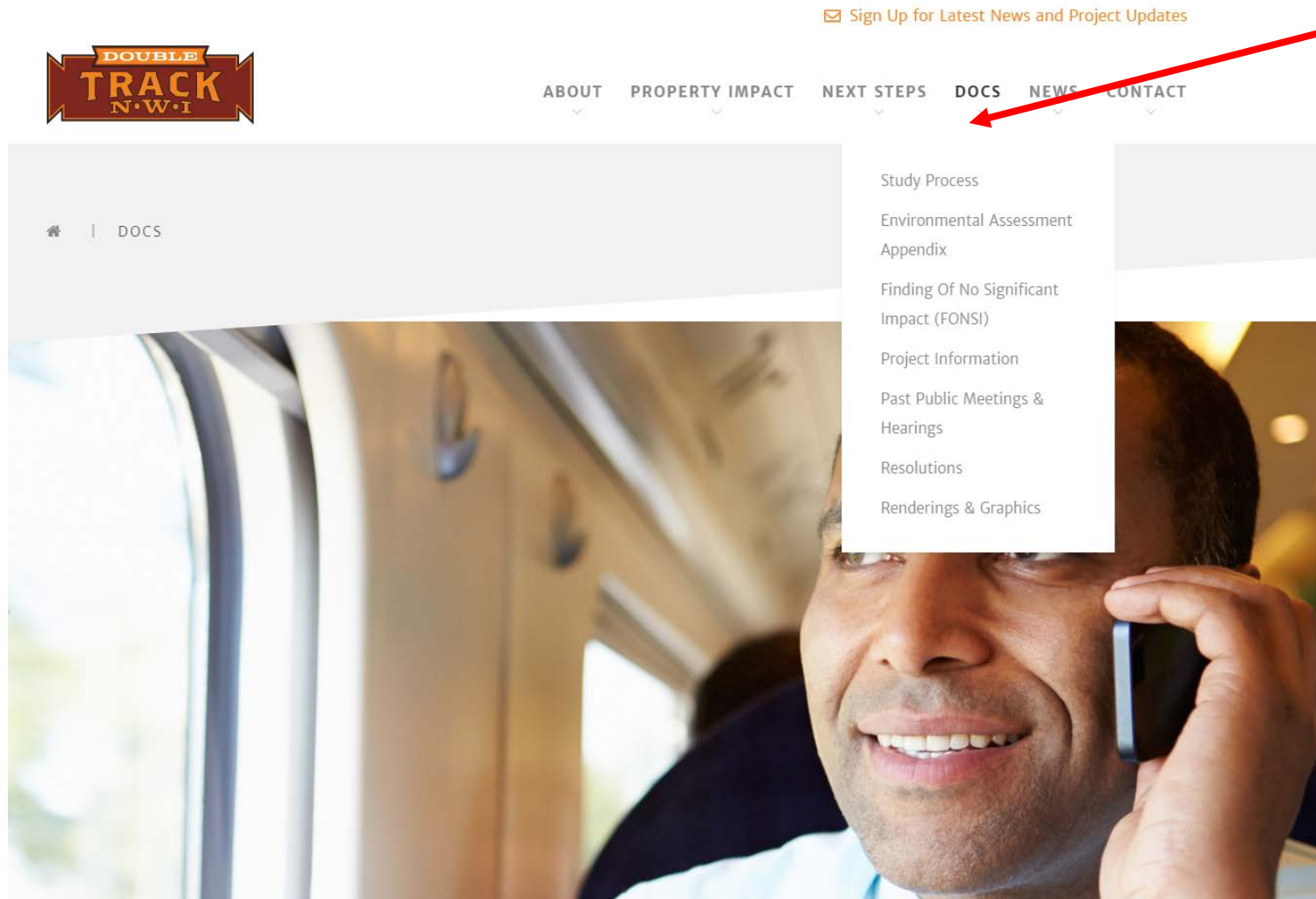




# DOUBLE TRACK NWI PROJECT

Project Website: [www.doubletrack-nwi.com](http://www.doubletrack-nwi.com)

**EXTENSIVE INFORMATION ABOUT COMPLIANCE WITH FEDERAL NATIONAL ENVIRONMENTAL POLICY ACT, STUDIES, IMPACTS, MITIGATION REQUIREMENTS, AND MORE**





# DOUBLE TRACK NWI PROJECT

- **Schedule - Major Milestones:**

Milestone	Begin Date	End Date
Final Design	October 2020	December 2020
Real Estate Acquisition	November 2019	Fall 2021*
Substantial Completion of Construction		June 2023
Revenue Service		September 2023

Note: Dates reflected are based on current schedule (without contingency) and subject to change

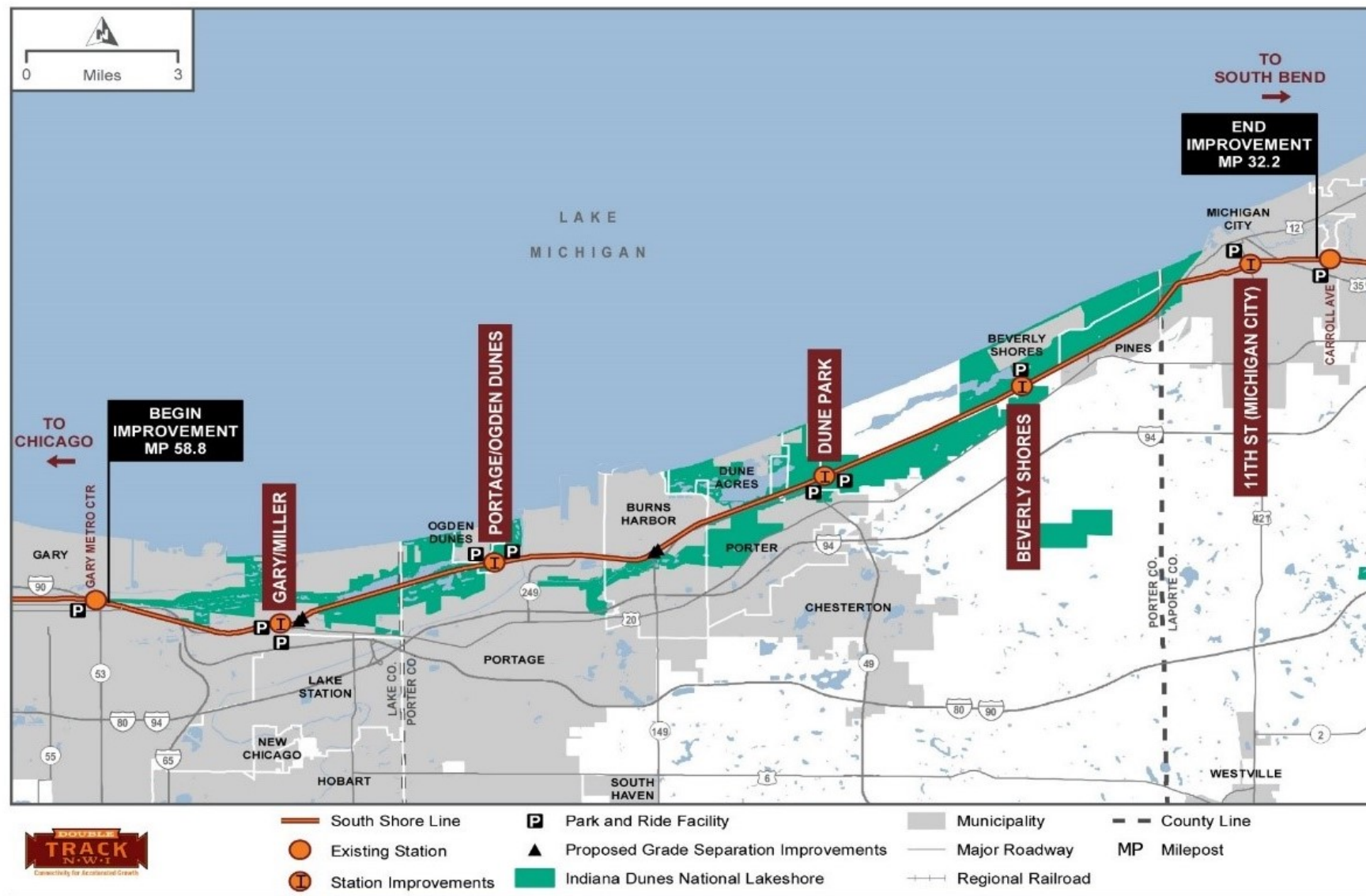
\*Real estate completion schedule assumes some parcels going to eminent domain. Most parcels will be ready by NTP for construction.

Project Limits:  
Milepost **58.8** @  
Virginia St in Gary

To

Milepost **32.2** @  
Michigan Blvd in  
Michigan City

Total Project Length:  
26.6 miles





# DOUBLE TRACK NWI PROJECT

## What is Included?

- Station improvements at 5 stations
- 4 bridges
- Realigns rail corridor in Gary to occupy part of current US 12 near Lake and Clay St.
- Replaces 1.9 miles of embedded, in-street track on 10<sup>th</sup> and 11<sup>th</sup> Streets in Michigan City with a segregated, ballasted double track rail corridor and reconstruction of 11<sup>th</sup> Street
- Removes 3 highway/railroad at-grade crossings along 10<sup>th</sup> Street in Michigan City
- 10 streets that intersect with 11<sup>th</sup> St. in Michigan City will have cul-de-sacs north of newly aligned tracks, resulting in the removal of 10 at-grade crossings
- Adherence to NEPA Mitigation Requirements and sensitive adjacent natural resource areas
- Development of Public Outreach Plan before & during construction
- Commissioning & Testing, Positive Train Control
- **Critical: Minimization of Impact on Existing SSL Service (incl. complex phasing and cutover draft plan)**



## Schedule – Anticipated Procurements:

### **Advance Demolition Work (3) – Design-Bid-Build**

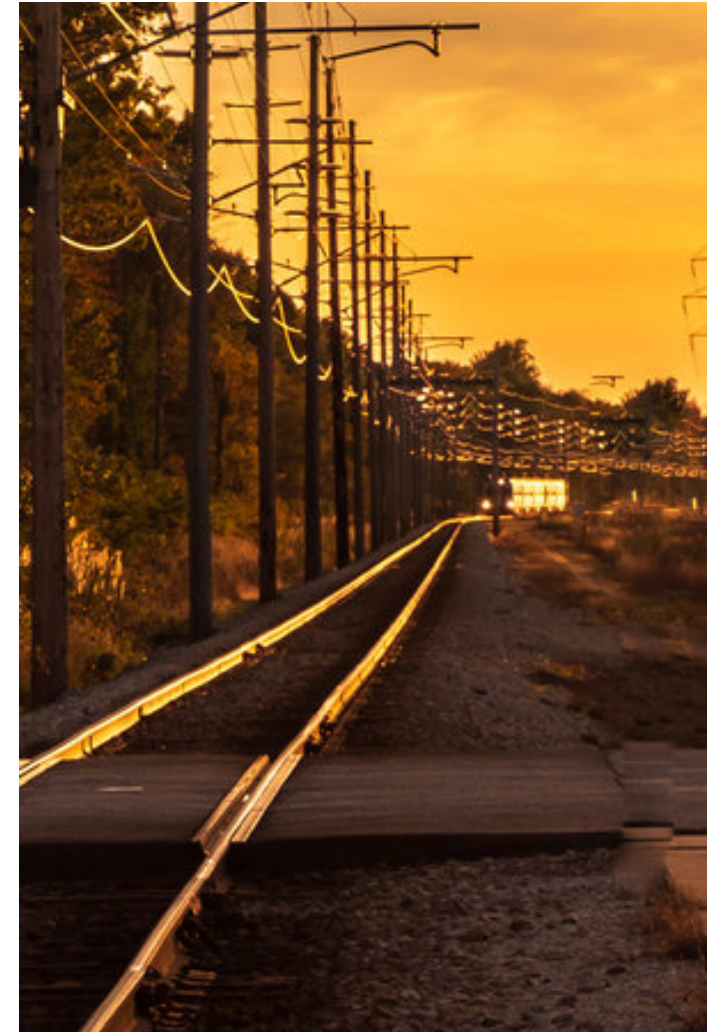
- Advertise Concurrently – Fall 2020
- Notice to Proceed – December 2020
- Completion- Summer 2021

### **Construction Packages (5) – Design-Bid-Build**

- Design – Completion in 2020
- Advertise Concurrently – January 2021
- Notice to Proceed – August 2021
- Substantial Project Completion – August 2023

### **Construction Management Services – Request for Proposal**

- Advertise – October 2020
- Notice to Proceed – May 2021
- Completion – September 2023



Note: Dates reflected are based on current schedule (without contingency) and subject to change

## Anticipated Construction Bid Packages

### Building Demolition & Site Clearing

- Package 1- Michigan City East
- Package 2- Michigan City West
- Package 3- Gary

### Construction Packages

- Package 1 – Main DT Contract- Gary to Michigan City
- Package 2 – 11<sup>th</sup> Street (Michigan City) Garage & Station
- Package 3 – Miller (Gary) Station & East Parking Lot
- Package 4 – Ogden Dunes South Parking Lot
- Package 5 – Dune Park Parking Lot Expansion

### Construction Management Services (CMS)

- One CMS contract for all construction packages





# DOUBLE TRACK NWI PROJECT

## Construction Package 1 – Main DT Contract- Gary to Michigan City

### Track

- Earthwork
- Drainage & Culverts
- Trackwork
  - Mainline
  - Storage, Siding
  - Gauntlet
  - Special

### Systems

- Overhead Catenary
- Signal
- Communications
- Positive Train Control (PTC)
- Grade Crossing Warnings

### Civil / Roadways / Parking

- Drainage
- Pavement & Striping
- Traffic Signals
- Surface Parking Lots
  - Miller (Gary) (west)
  - 11<sup>th</sup> St (Michigan City)

### Structures

- Bridges
  - CSX
  - Hobart Road
  - Norfolk Southern
  - ArcelorMittal
- Retaining Walls
  - Setout tracks at Miller
  - State Road 49 in Chesterton

### Station Platforms

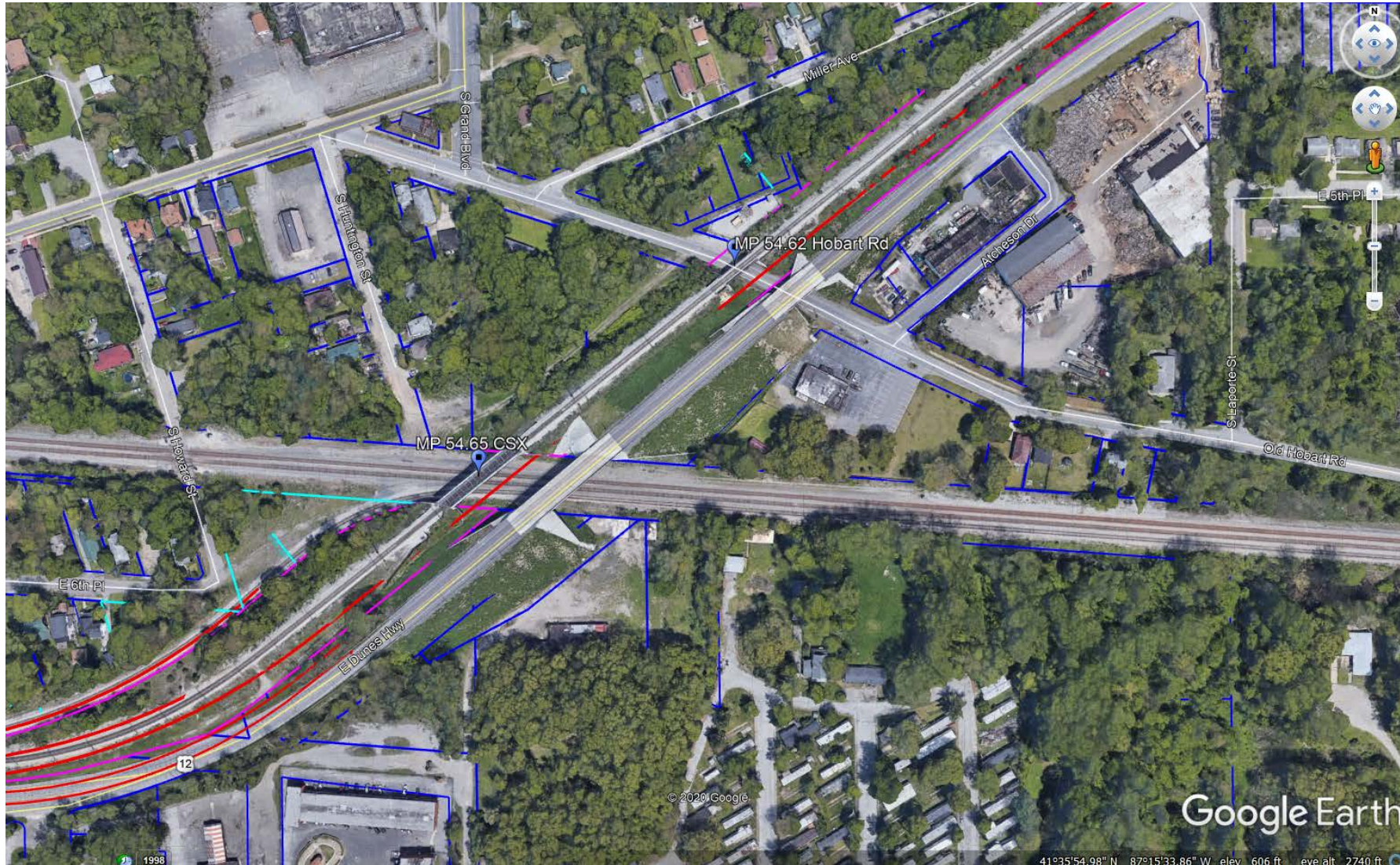
- High-level platforms will be very similar to Dune Park
- Miller (Gary) (2 high level)
- Ogden Dunes (1 high level)
- Dune Park (1 low level)
- Beverly Shores (2 low level)
- 11<sup>th</sup> St (Michigan City) (2 high level)

### Miscellaneous

- Salt Storage Facilities
- Signage

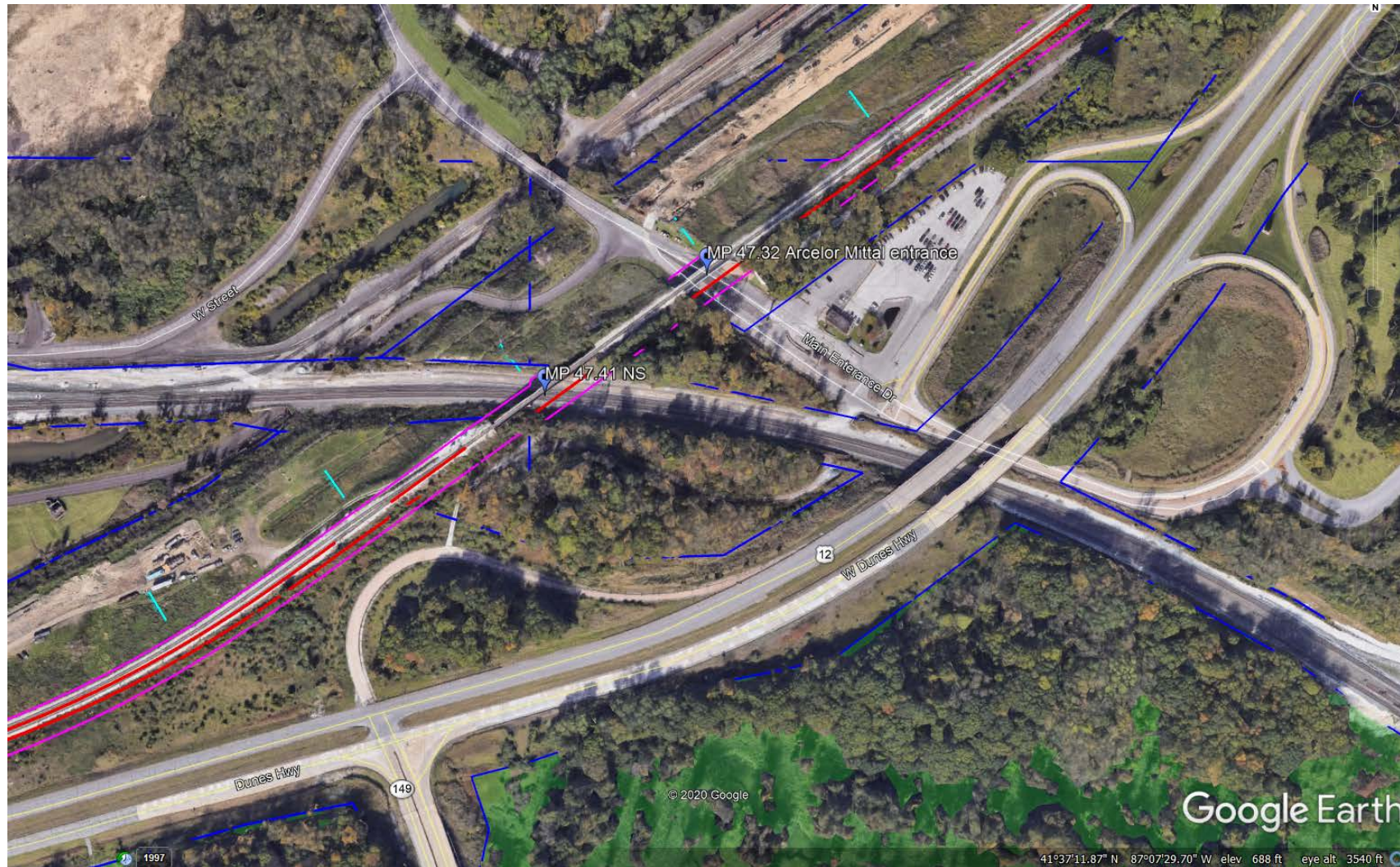


## Bridges: CSX and Hobart Road in Gary





## Bridges: Norfolk Southern and ArcelorMittal Main Entrance in Burns Harbor

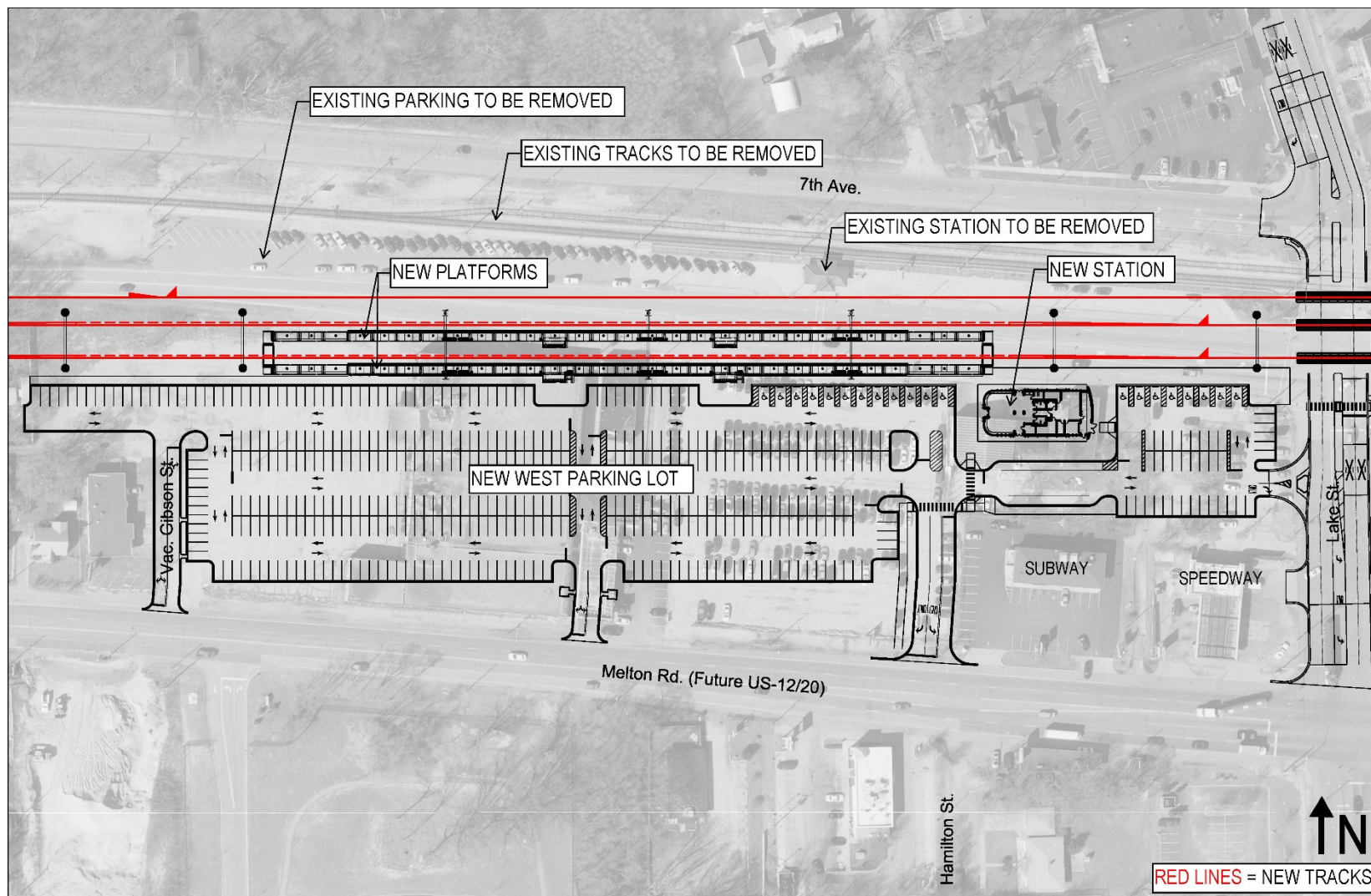




[illegible]

## Miller (Gary) West Lot

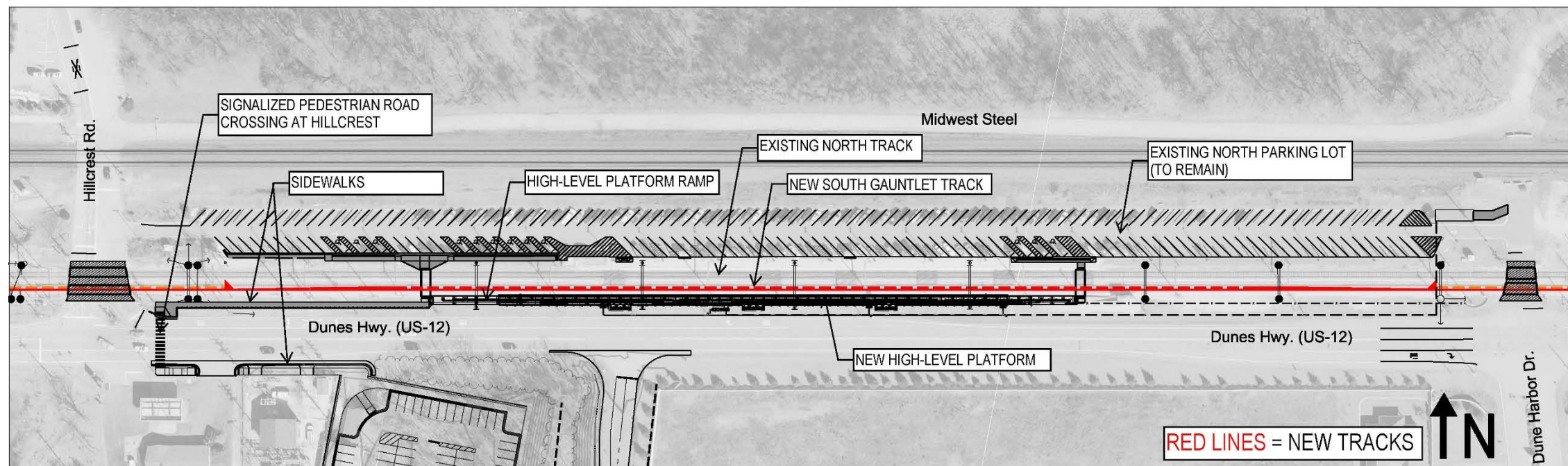
90% Design Aug 2020;  
subject to change





## Portage/Ogden Dunes Station and North Lot

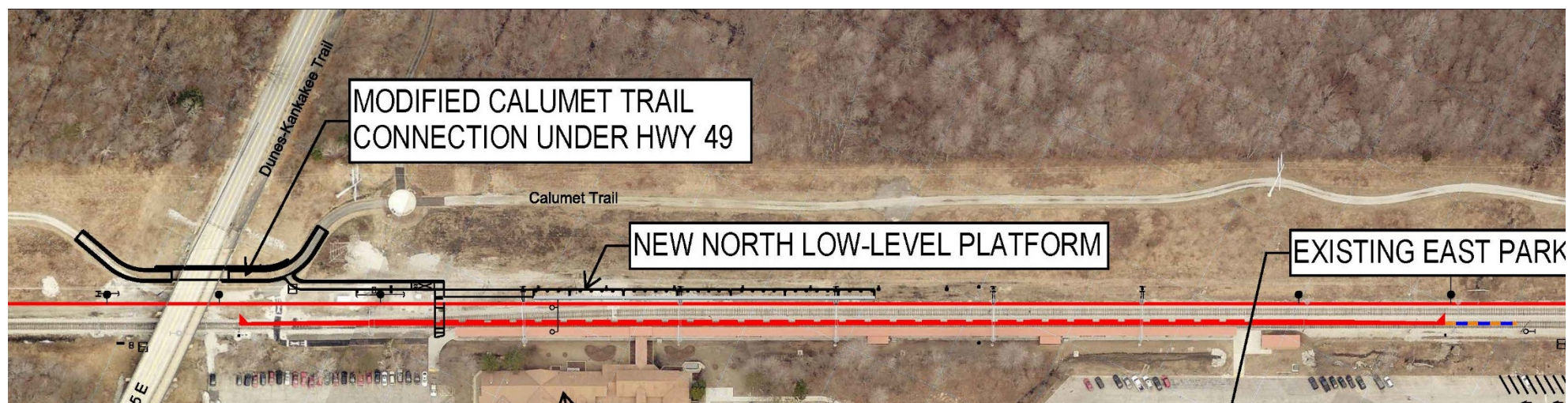
90% Design Aug 2020;  
subject to change





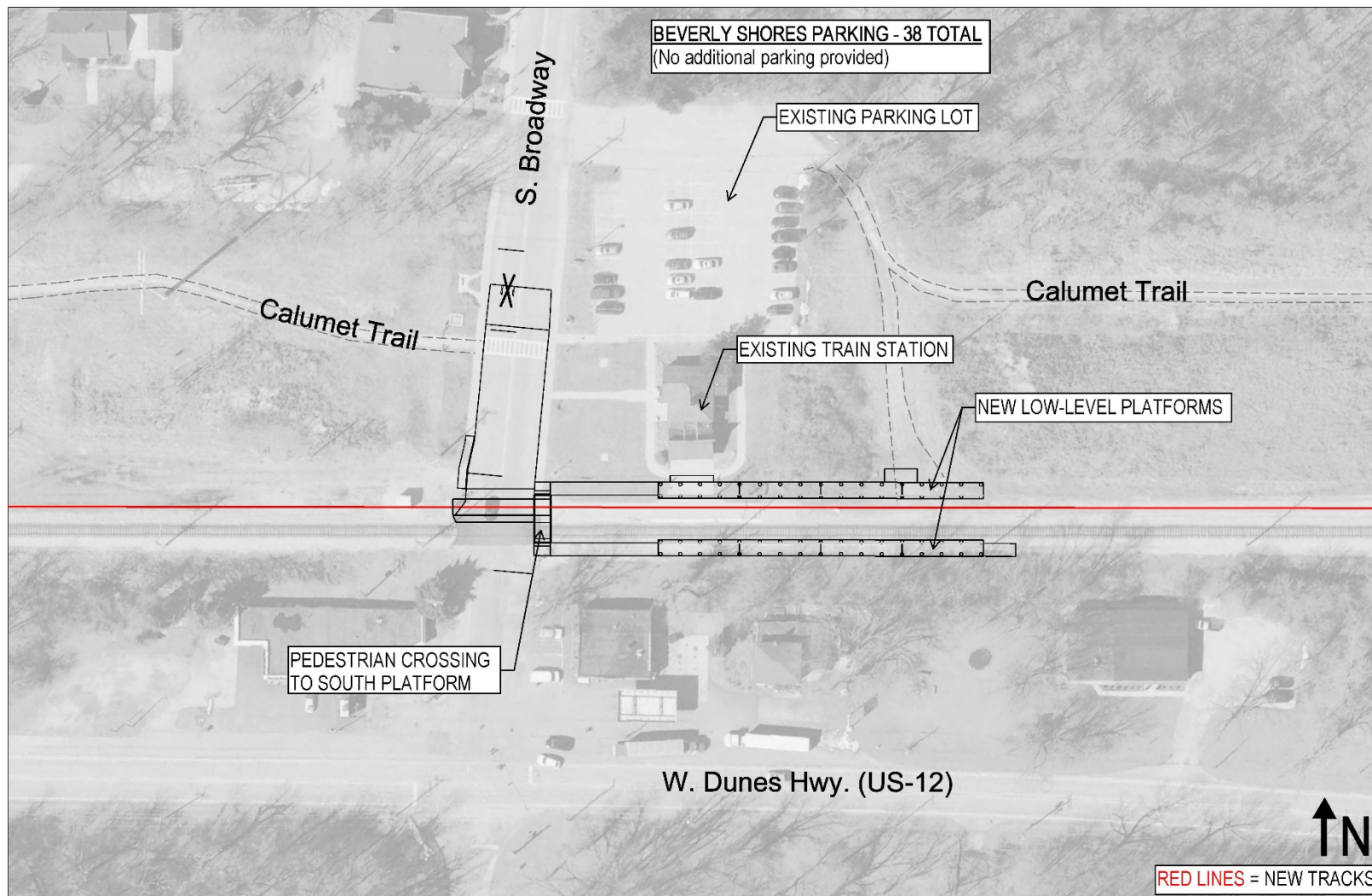
## Dune Park (all work except east lot)

90% Design Aug 2020;  
subject to change



## Beverly Shores Platforms

90% Design Aug 2020;  
subject to change





## Construction Package 2 – Michigan City Garage & Station

### Building

- Building Demolition
- Historic stationhouse façade removal, restoration & replacement
- Precast Garage Structure
- 11<sup>th</sup> Street Station
- Commercial Space

### Systems

- MEP systems
- Elevator
- Communications

### Civil / Roadway

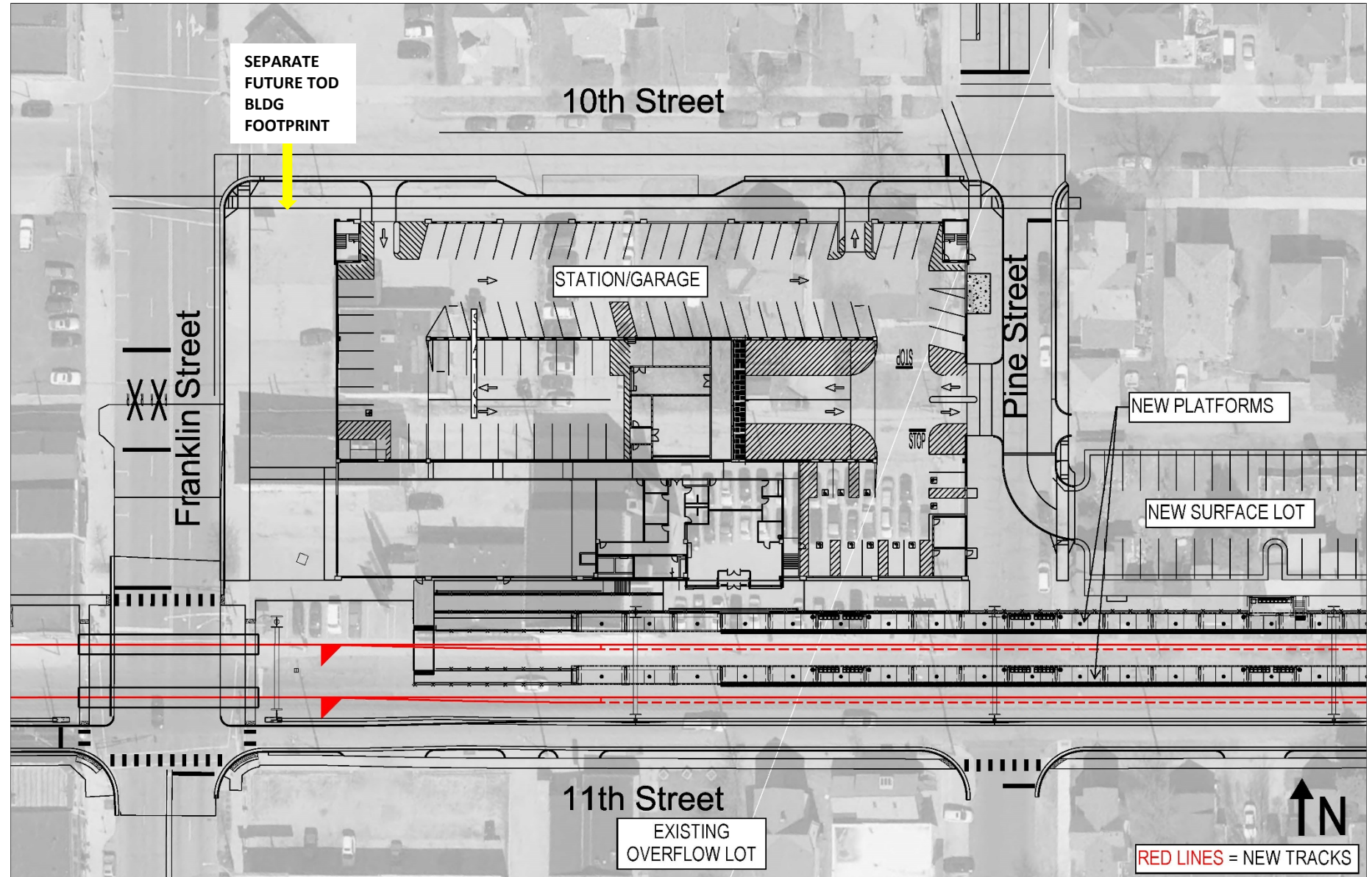
- Drainage
- Pavement & Striping





## Construction Package 2 – 11<sup>th</sup> St (Michigan City) Garage & Station

90% Design Aug 2020;  
subject to change



## Construction Package 2 – 11<sup>th</sup> St Station (Michigan City) Garage & Station





## Construction Package 2 – 11<sup>th</sup> St Station (Michigan City) Garage & Station





## Construction Package 2 – 11<sup>th</sup> St Station (Michigan City) Garage & Station





## Construction Package 3 – Miller (Gary) Station & East Parking Lot

### Building

- Demolition
- Stationhouse

### Systems

- MEP systems
- Communications

### Civil / Parking

- Drainage
- Infiltration System
- Pavement & Striping
- Lighting
- Landscaping



VIEW: Looking westward just to the north of station  
DRAFT APRIL 2020 AT 60% DESIGN;  
NOT FINAL DESIGN



## Miller Station (Gary) – 60% Design

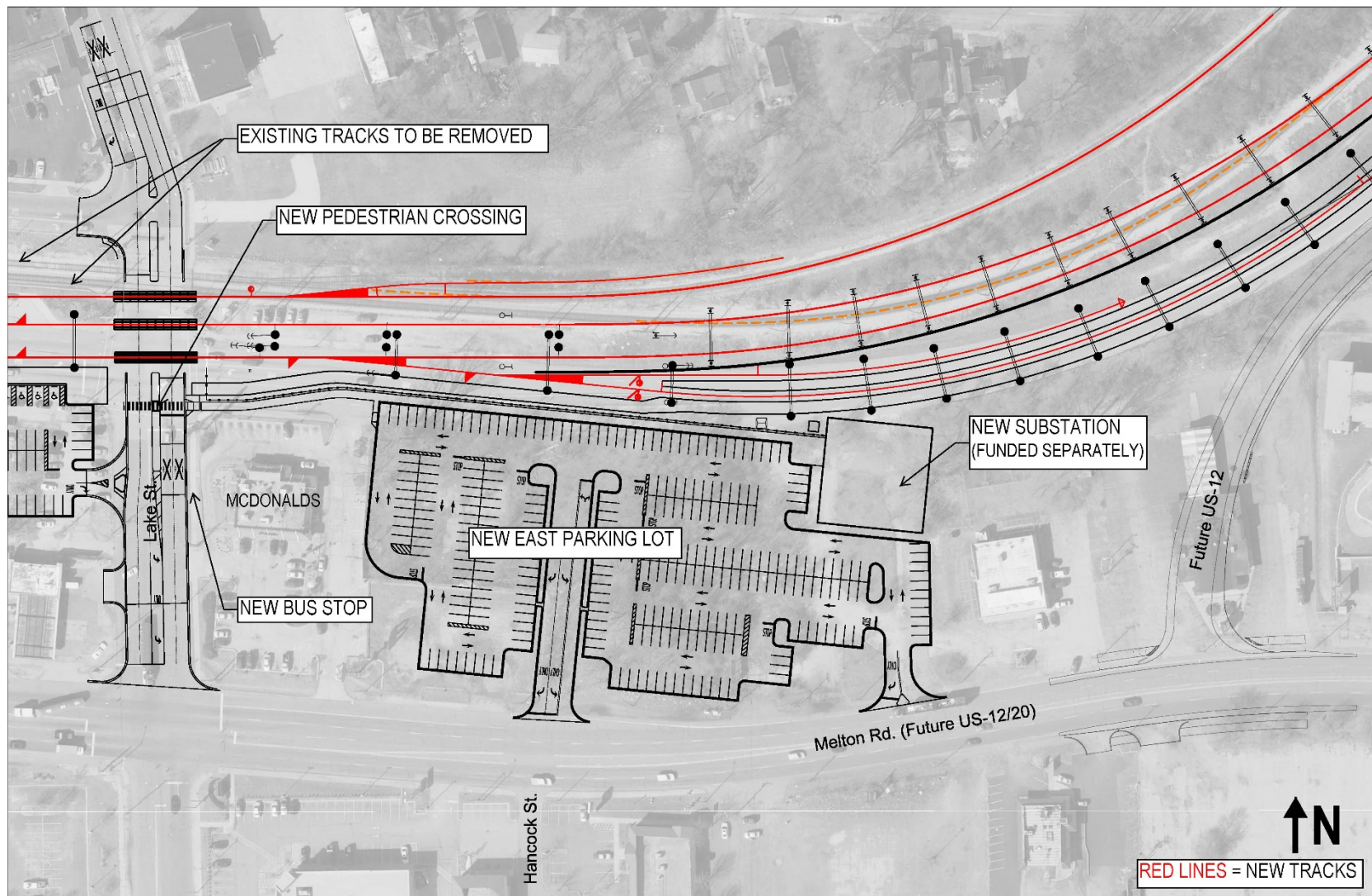
VIEW: Looking Northeast at southwest corner of station  
DRAFT APRIL 2020 AT 60% DESIGN;  
NOT FINAL DESIGN





## Miller Station (Gary)

90% Design Aug 2020;  
subject to change



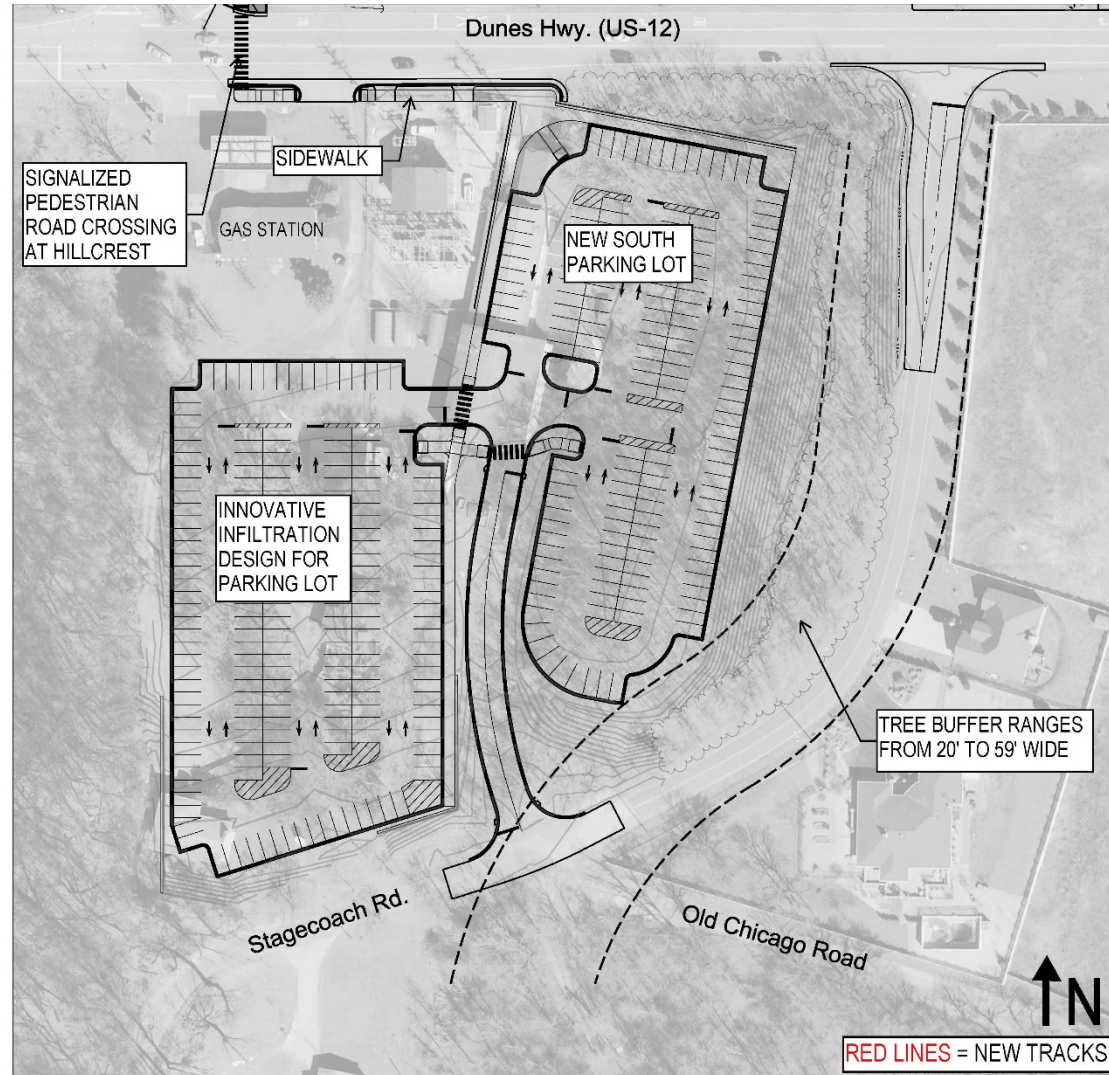
## Construction Package 4 – Ogden Dunes South Parking Lot

### Civil / Roadway/ Parking

- Tree/Site Clearing
- Surface Parking
- Drainage
- Pavement & Striping

### Structures

- Retaining wall



90% Design Aug 2020;  
subject to change



## Construction Package 5 – Dune Park East Parking Lot Expansion

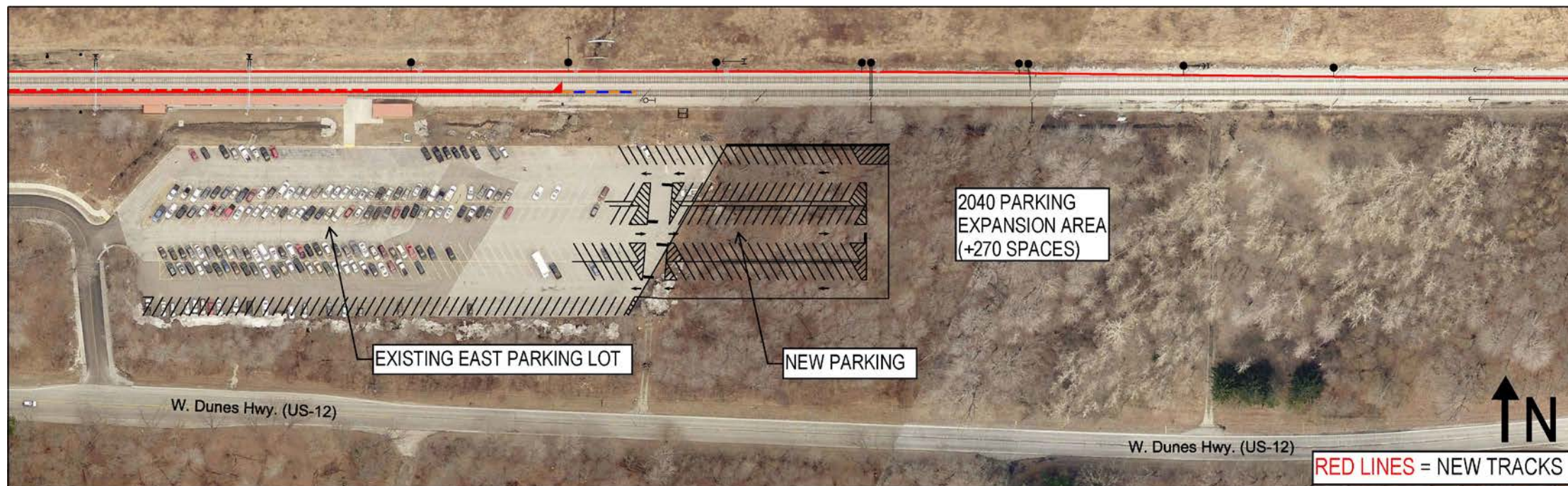
### Civil / Roadway / Parking

- Tree/Site Clearing
- Earthwork
- Drainage
- Pavement & Striping
- Infiltration System
- Landscaping



## Dune Park Station – 60% Design

90% Design Aug 2020;  
subject to change





# DOUBLE TRACK NWI PROJECT

## **PLEASE NOTE:**

- The procurement packages are released in NICTD's Plan Room and notices are issued in all local papers.
- Pre-bid meetings will be held for each bid package (or may be grouped) at which important bid details are reviewed.
- Each bid package will include contact information for questions submission.





# RAILCAR REHABILITATION PROGRAM

West Lake End Life Rehabilitation parts needed over the next few years.

Parts	Estimated Quantity Needed
Low Location Exit Path Marking (HPPL)	32 car sets
Interior Cab Light fixtures	132
Exterior Decals (various)	22 car sets
Interior Panels (various)	22 car sets
Light Lenses (various)	30 car sets
Pilot (need stainless steel fabricator)	28
Rail Batteries (NiCd and Lead Acid)	No specified quantity
Air Reservoirs (ASME Certified)	24 car sets
Seat cushions (foam, vinyl, seat pans, seat shrouds)	32 car sets
Stairwells (need stainless steel fabricator)	124

Contact:

Greg Yovich  
[greg.yovich@nctd.com](mailto:greg.yovich@nctd.com)

and

Ben Wojkovich  
[benjamin.wojkovich@nctd.com](mailto:benjamin.wojkovich@nctd.com)

## MULTI-YEAR PROJECT

TO BE AWARDED UNDER A SINGLE COMPETITIVE BID PROCESS

- 5 NEW PREFABRICATED SUBSTATIONS
- MODERNIZE 8 OF 10 EXISTING SUBSTATIONS
  - RECTIFIER TRANSFORMERS
  - RECTIFIER
  - SWITCH GEAR
  - PROTECTIVE RELAYING
- SCADA RTU AND TRANSFER TRIP MODERNIZATION





## TENTATIVE SCHEDULE

- 2020
  - BID PHASE
  - NTP
- 2021
  - REPLACE 2 RECTIFIER TRANSFORMERS
    - BUILD STORAGE FACILITY FOR 1 AS SPARE
  - BEGIN CONSTRUCTION OF NEW PINES SUBSTATION
- 2022
  - BEGIN CONSTRUCTION OF NEW BAILLY SUBSTATION
- 2024
  - BEGIN CONSTRUCTION OF NEW MILLER SUBSTATION



## TENTATIVE SCHEDULE

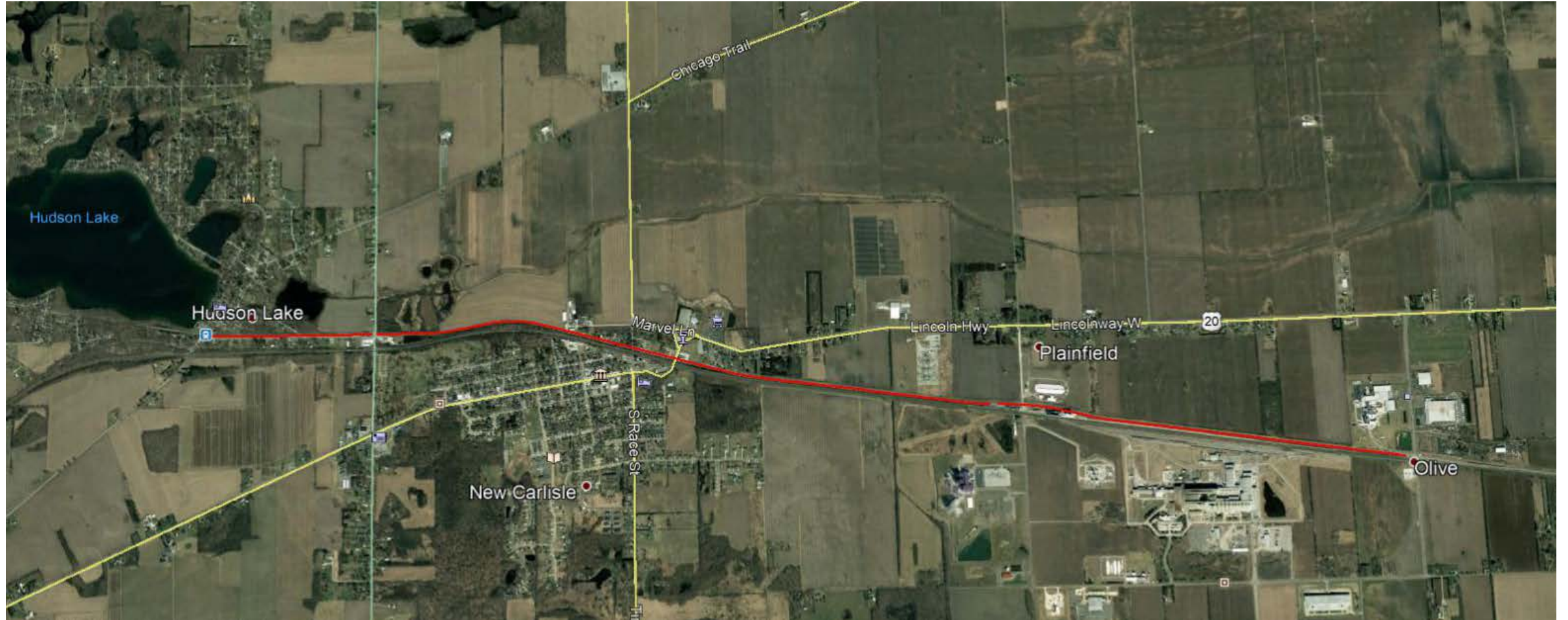
### ➤ 2025

- MODERNIZE TRANSFER TRIP SCHEME AND RTUs SYSTEMWIDE
  - 10 EXISTING
  - 3 NEW AS PROVISIONED
- MODERNIZE FURNESSVILLE SUBSTATION
  - RECTIFIER TRANSFORMER
  - RECTIFIER
  - SWITCHGEAR and PROTECTIVE RELAYING

### ➤ 2026 AND BEYOND

- MODERNIZE 7 ADDITIONAL SUBSTATIONS
- BUILD 2 ADDITIONAL SUBSTATIONS









# CAMERA SYSTEM UPGRADES

Assess NICTD's existing video system (cameras, servers, storage and network bandwidth).

Design and construct a high bandwidth network from Chicago to South Bend (10 GB).

Provide planning and installation for current and new camera locations.

Replacement of local network infrastructure (switches and media converters).

Specification and installation of video storage devices and video management system.

Provide video feeds at designated locations.



# METRA ELECTRIC DISTRICT IMPROVEMENTS

This project will be funded primarily by NICTD through State of Good Repair funding received from the Federal Transit Administration.

All work to take place on Metra's railway and this project will be procured and contracted out through Metra. <https://metrarail.com/about-metra/metra-business>

Engineering and design work is currently underway.

Construction is expected to be released for bid sometime in the spring of 2021

Work will include:

- Additional track, switches, crossover track.
- Associated catenary and signaling work.
- One new 720 foot platform plus and existing platform extension at Millennium Station
- One new 720 foot island platform at Van Buren Station with pedestrian stairway to Jackson St.
- New pedestrian tunnel with stairway and elevator access at Van Buren to the new platform







# TRANSIT ORIENTED DEVELOPMENT PLANNING

Continuation of the 2017 West Lake Transit Oriented Development study (available on the RDA's website [www.in.gov/rda/](http://www.in.gov/rda/)).

The initial project looked at development opportunities surrounding the new West Lake stations.

The new planning study will continue that initial work and expand the service area to cover all of NICTD's Indiana Stations.

- Assess areas surrounding each station for development readiness
- Pinpoint existing infrastructure opportunities
- Identify potential within TOD areas.



## DISADVANTAGED BUSINESS ENTERPRISE PARTICIPATION

Current DBE Goal: 12%

DBE goal effective October 1, 2019 through September 30, 2022

DBE vendor listing on NICTD Website

Indiana Department of Transportation – DBE certifying entity for the State of Indiana

<https://entapps.indot.in.gov/DBELocator/>

NICTD DBE Officer:

Kelly Wenger  
(219) 874-4221 ext. 217  
[kelly.wenger@nictd.com](mailto:kelly.wenger@nictd.com)





# ADDITIONAL SUPPLIER OPPORTUNITIES

## Services

- Snow plowing at Stations
- Heating & Air Conditioning Repairs
- Overhead Door Repairs
- Fencing
- Cleaning

## Supplies

- Safety Supplies
- Hand Tools
- Fasteners
- Electrical Supplies
- Fuel, Oils, and Lubricants
- Welding Supplies
- Office Supplies
- Printing (signage/time tables)



# PURCHASING DEPARTMENT

## Key Contacts

Tony Siegmund, Purchasing Manager

(219)874-4221 ext. 267

[tony.siegmund@nictd.com](mailto:tony.siegmund@nictd.com)

Michele Laney, Buyer

(219)874-4221 ext. 262

[michele.laney@nictd.com](mailto:michele.laney@nictd.com)

Carrie Hoyt, Contract Specialist

(219)874-4221 ext. 210

[carrie.hoyt@nictd.com](mailto:carrie.hoyt@nictd.com)

Stephanie Modglin, Purchasing Agent

(219)874-4221 ext. 202

[stephanie.modglin@nictd.com](mailto:stephanie.modglin@nictd.com)

Alex Largen, Chief Clerk of Procurement

(219) 874-4221 ext. 255

[alexandra.largen@nictd.com](mailto:alexandra.largen@nictd.com)



NICTD Website

[www.mysouthshoreline.com](http://www.mysouthshoreline.com)

West Lake Corridor Project

[www.nictdwestlake.com](http://www.nictdwestlake.com)

Plan Room

[www.nictdplanroom.com](http://www.nictdplanroom.com)

Double Track NWI Project

[www.doubletrack-nwi.com](http://www.doubletrack-nwi.com)